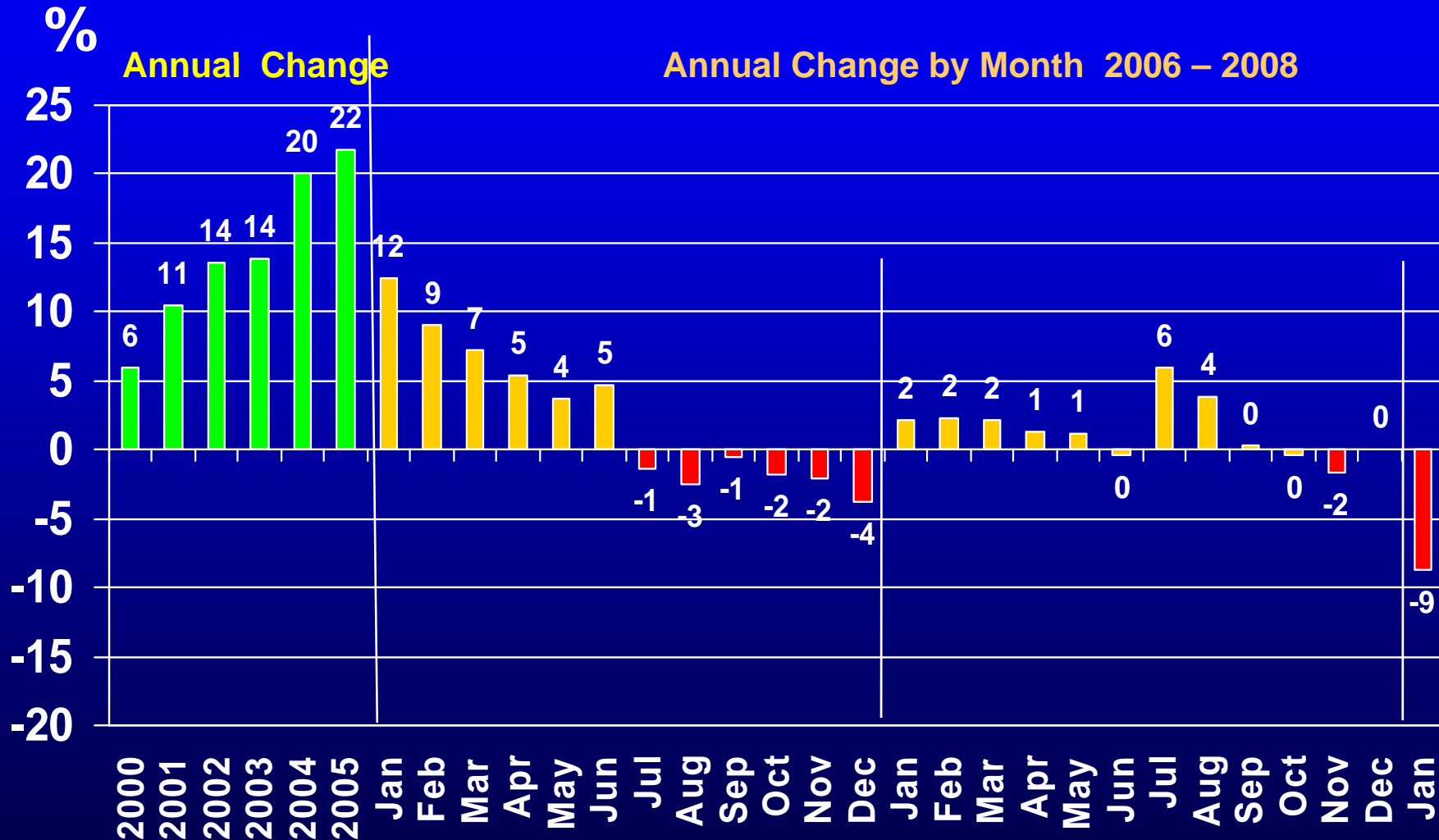
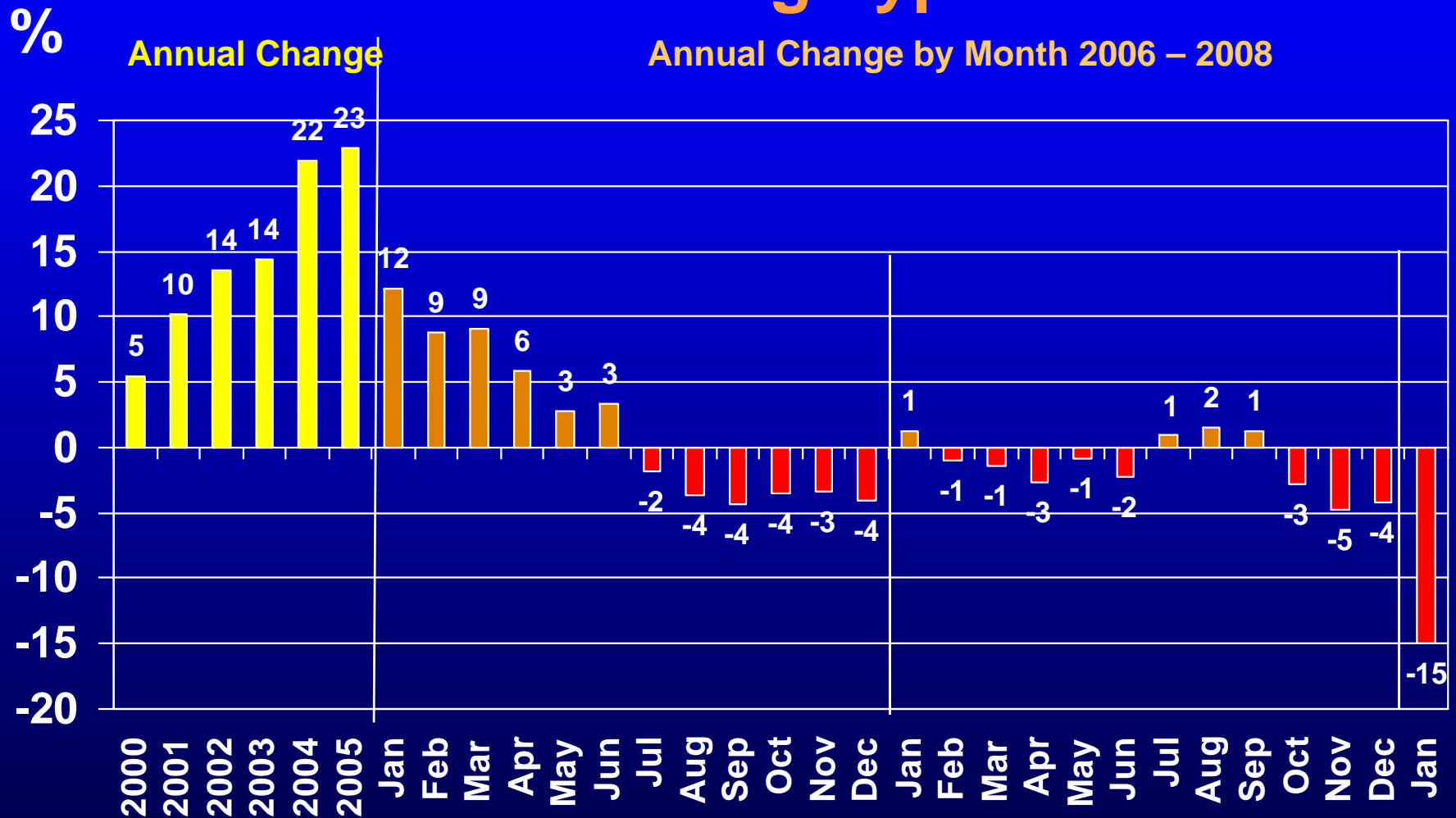


# Average Sales Price Percent Change Washington MSA All Housing Types

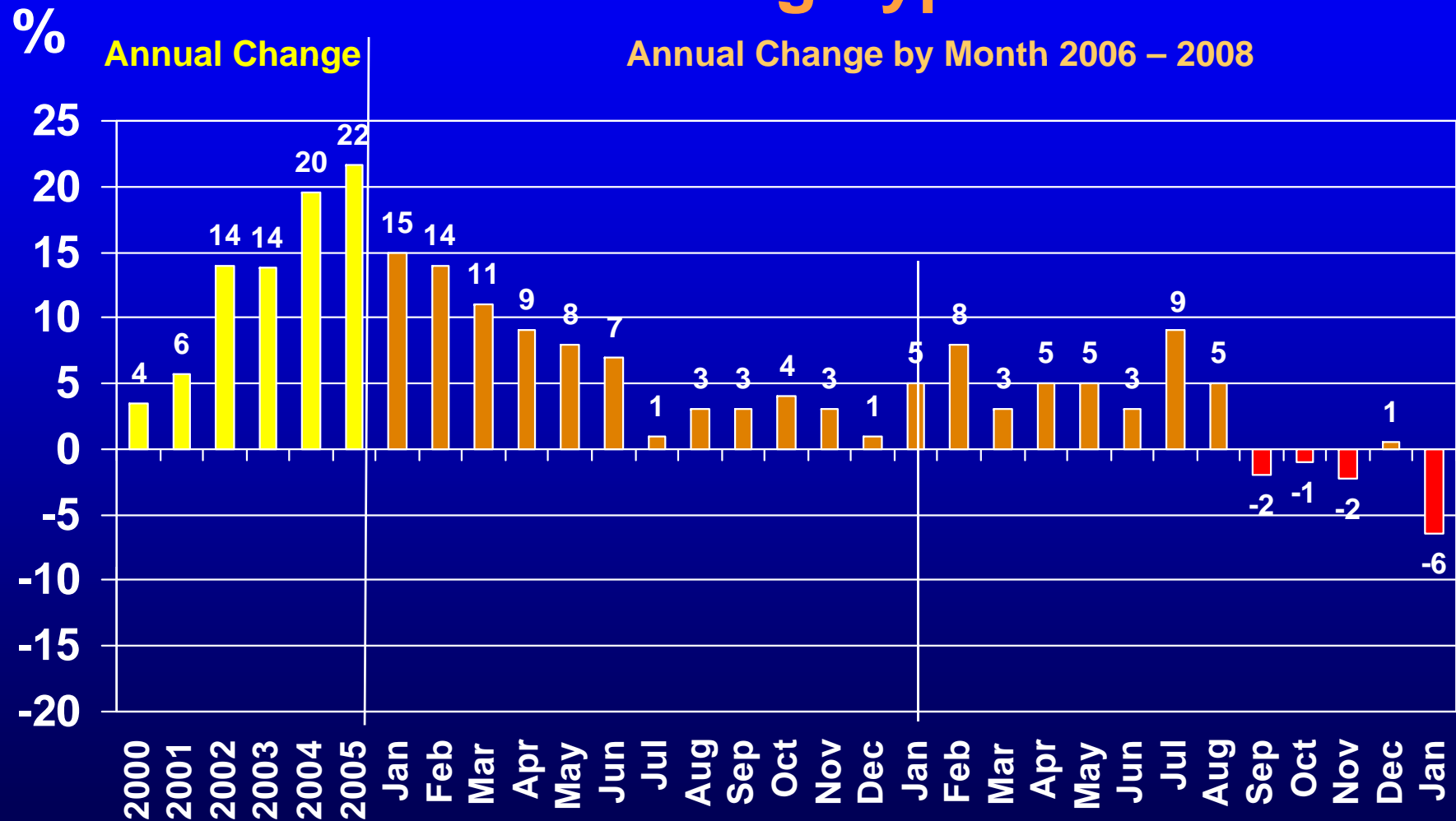


Source: MRIS, GMU Center for Regional Analysis

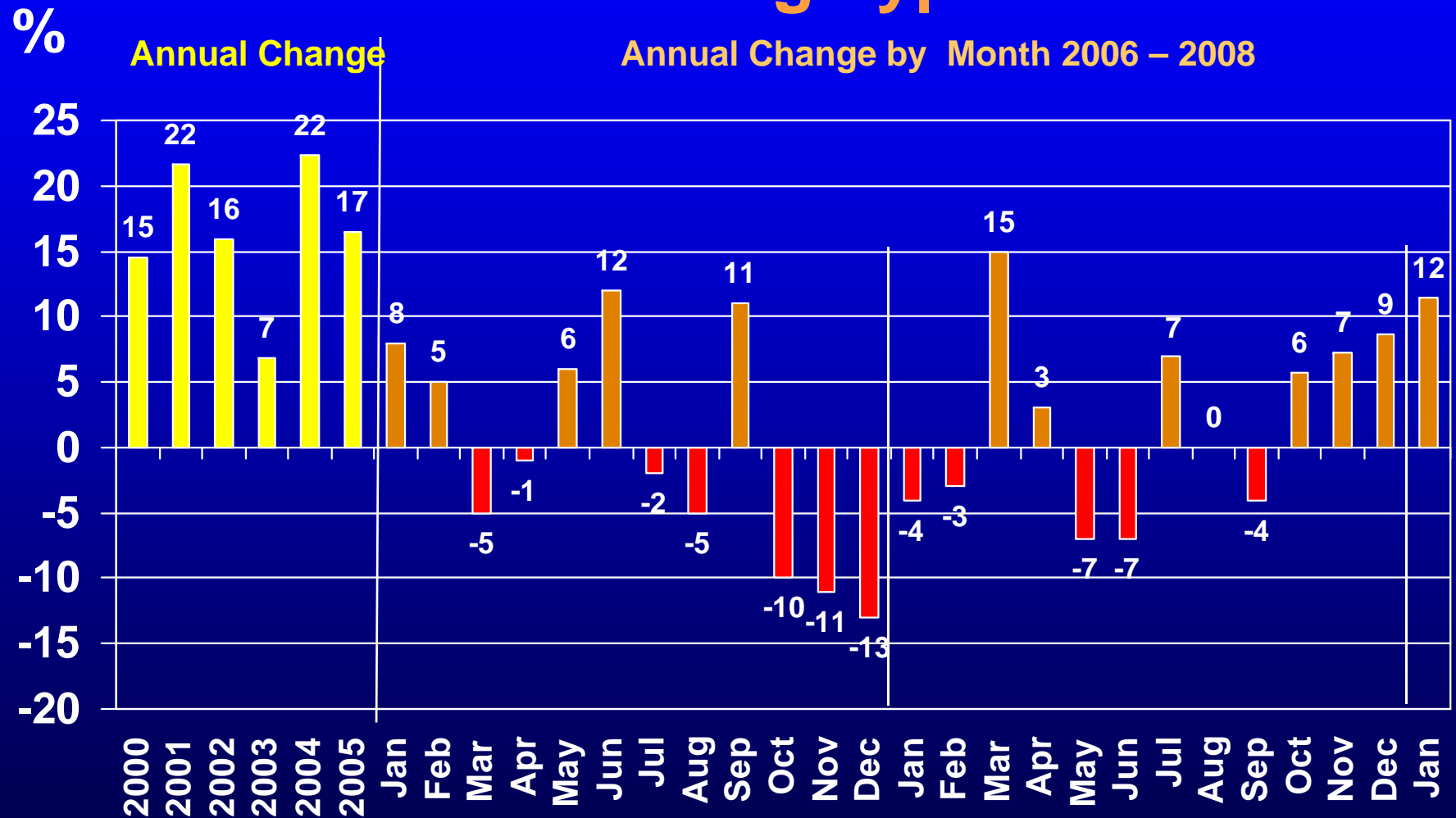
# Average Sales Price Percent Change Northern Virginia All Housing Types



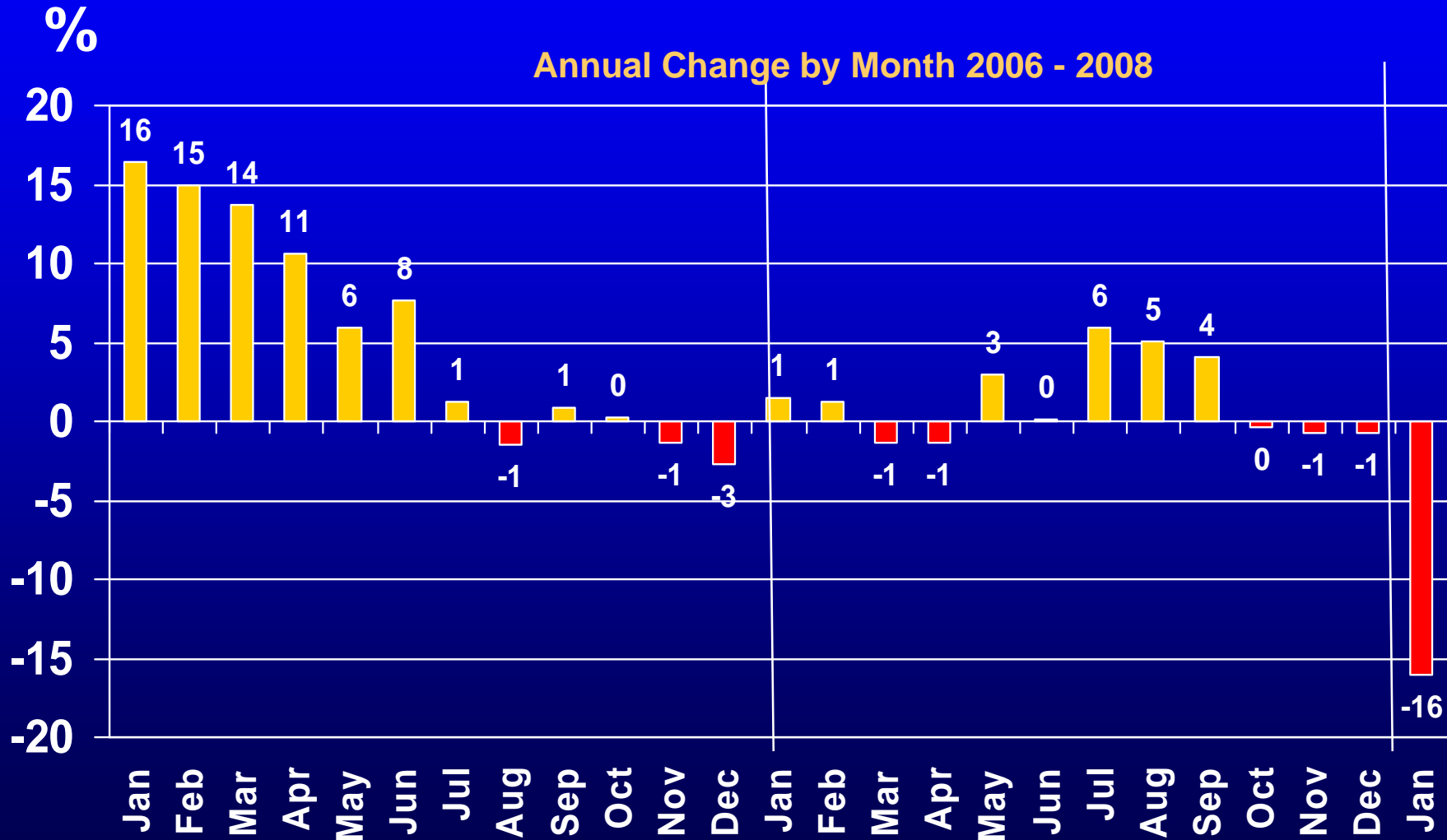
# Average Sales Price Percent Change Suburban Maryland All Housing Types



# Average Sales Price Percent Change District of Columbia All Housing Types

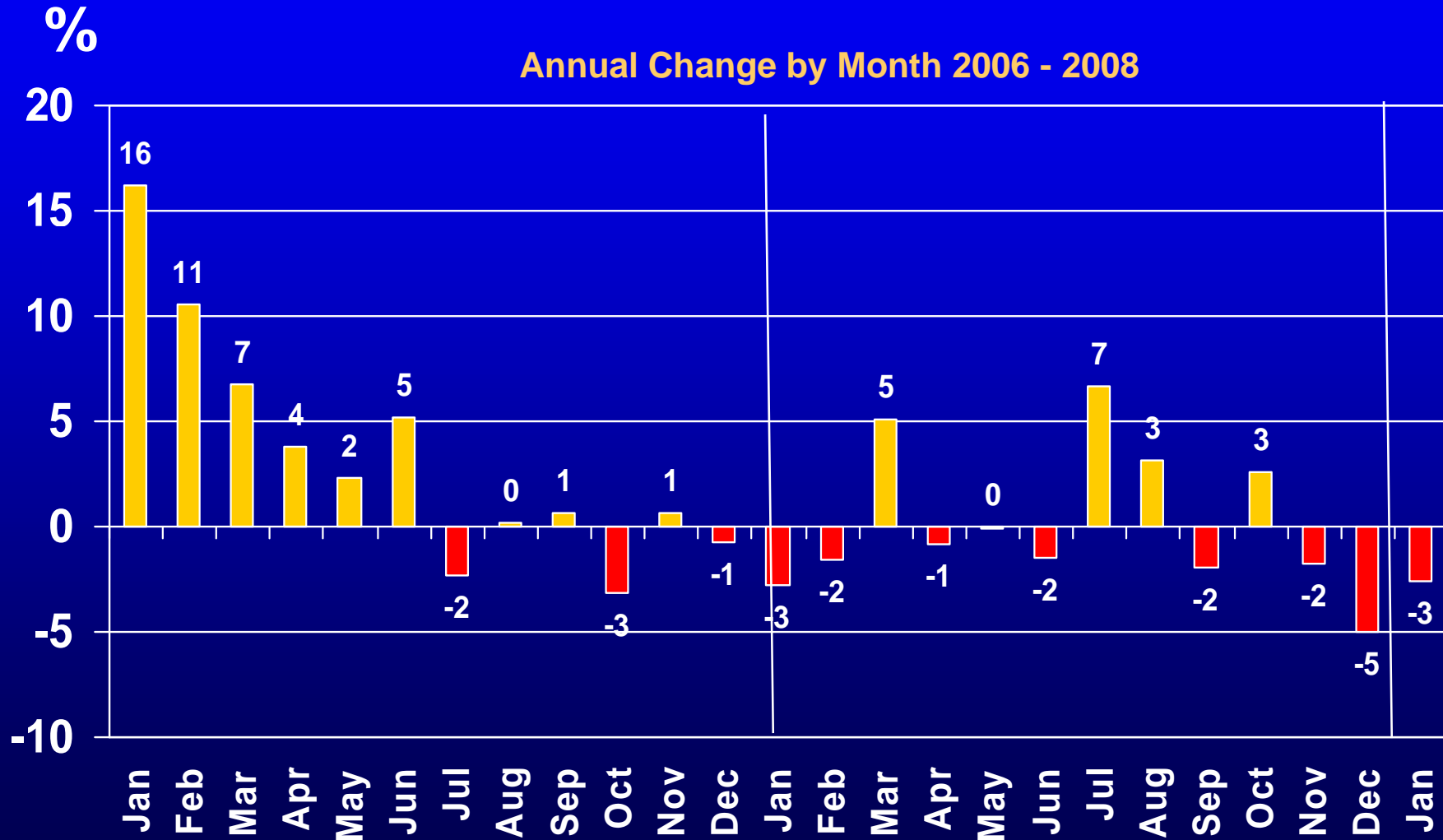


# Average Sales Price Percent Change Washington MSA Single Family Detached



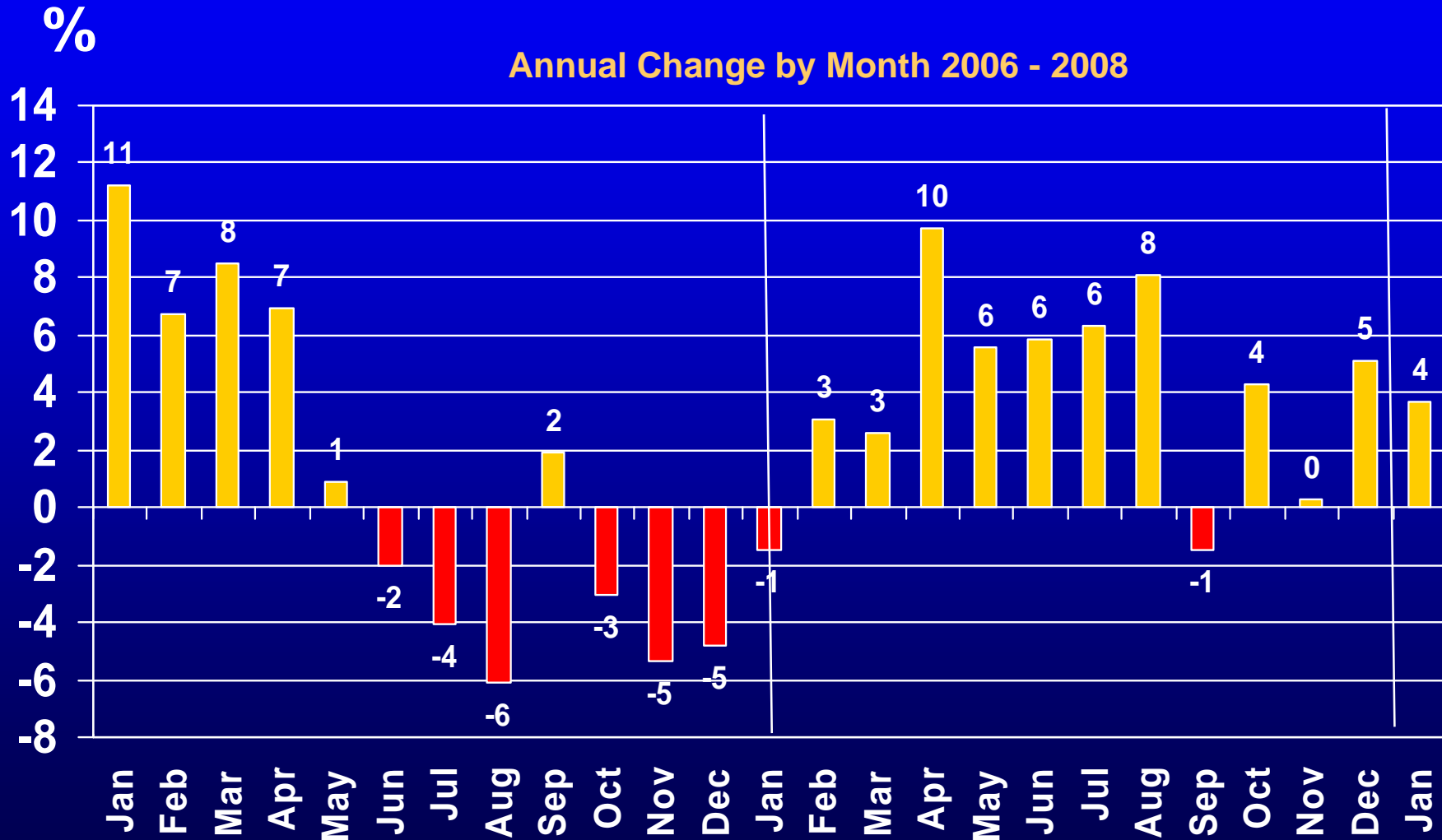
Source: MRIS, GMU Center for Regional Analysis

# Average Sales Price Percent Change Washington MSA Single Family Attached



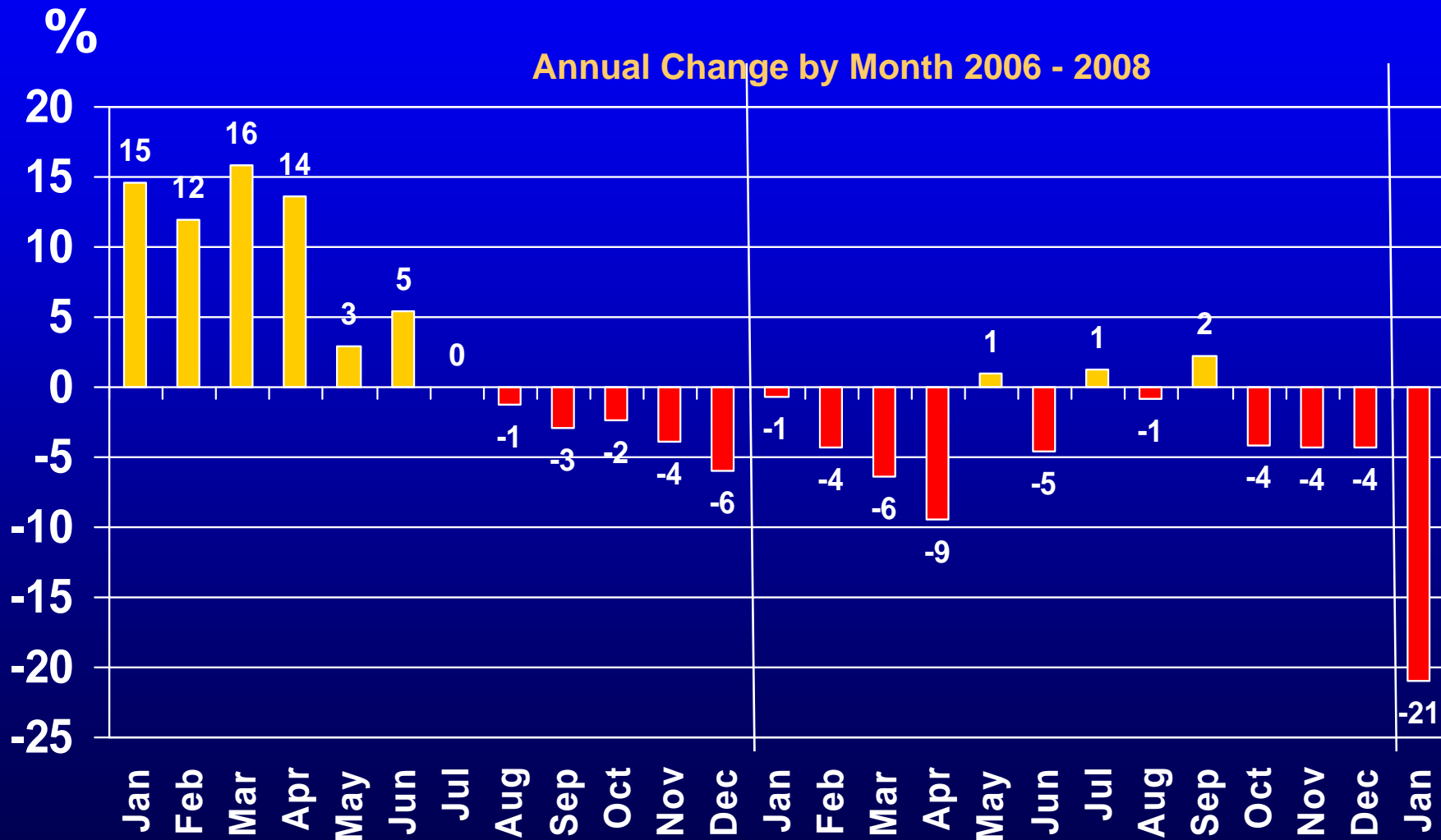
Source: MRIS, GMU Center for Regional Analysis

# Average Sales Price Percent Change Washington MSA Condominiums



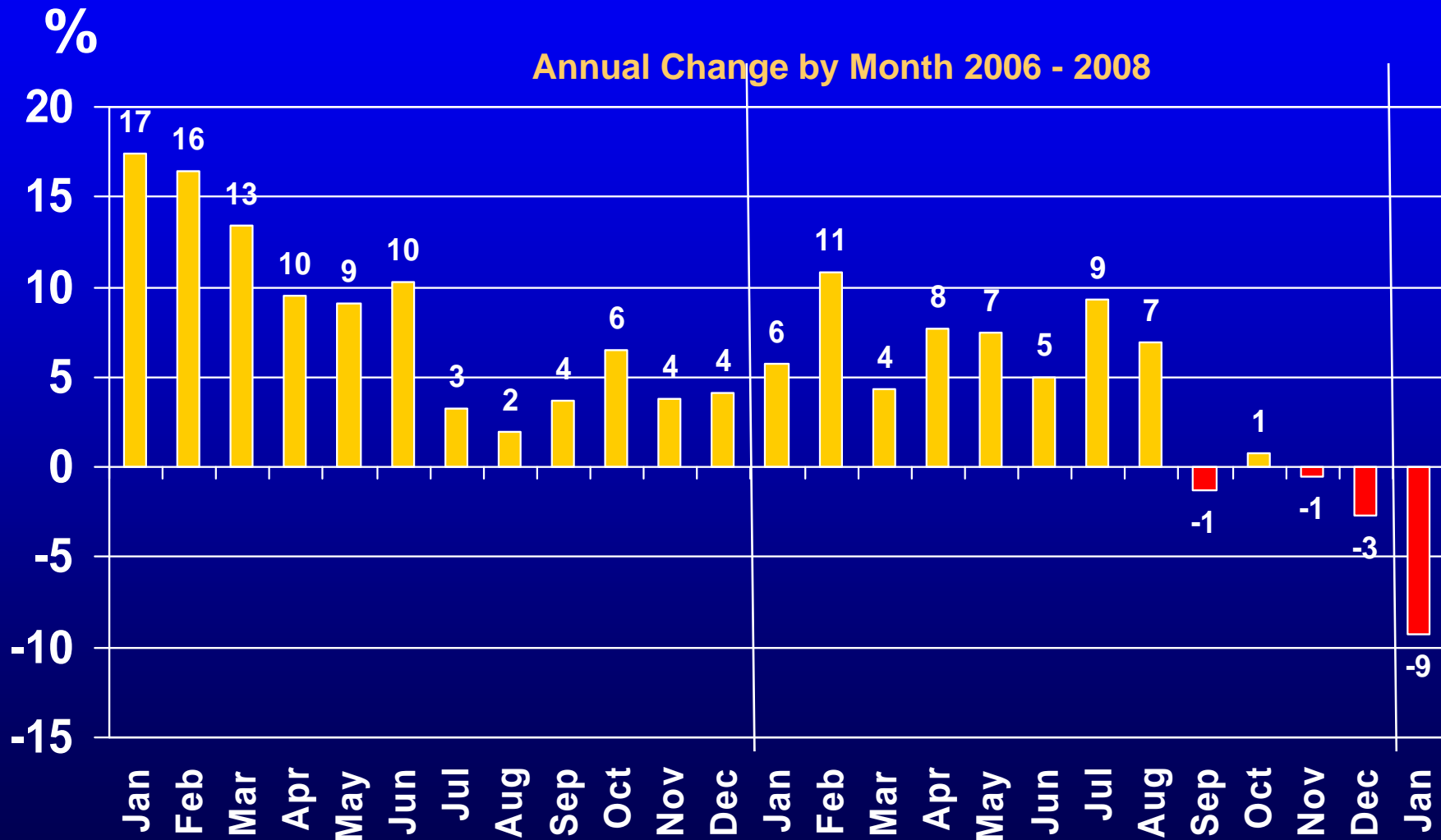
Source: MRIS, GMU Center for Regional Analysis

# Average Sales Price Percent Change Northern Virginia Single Family Detached



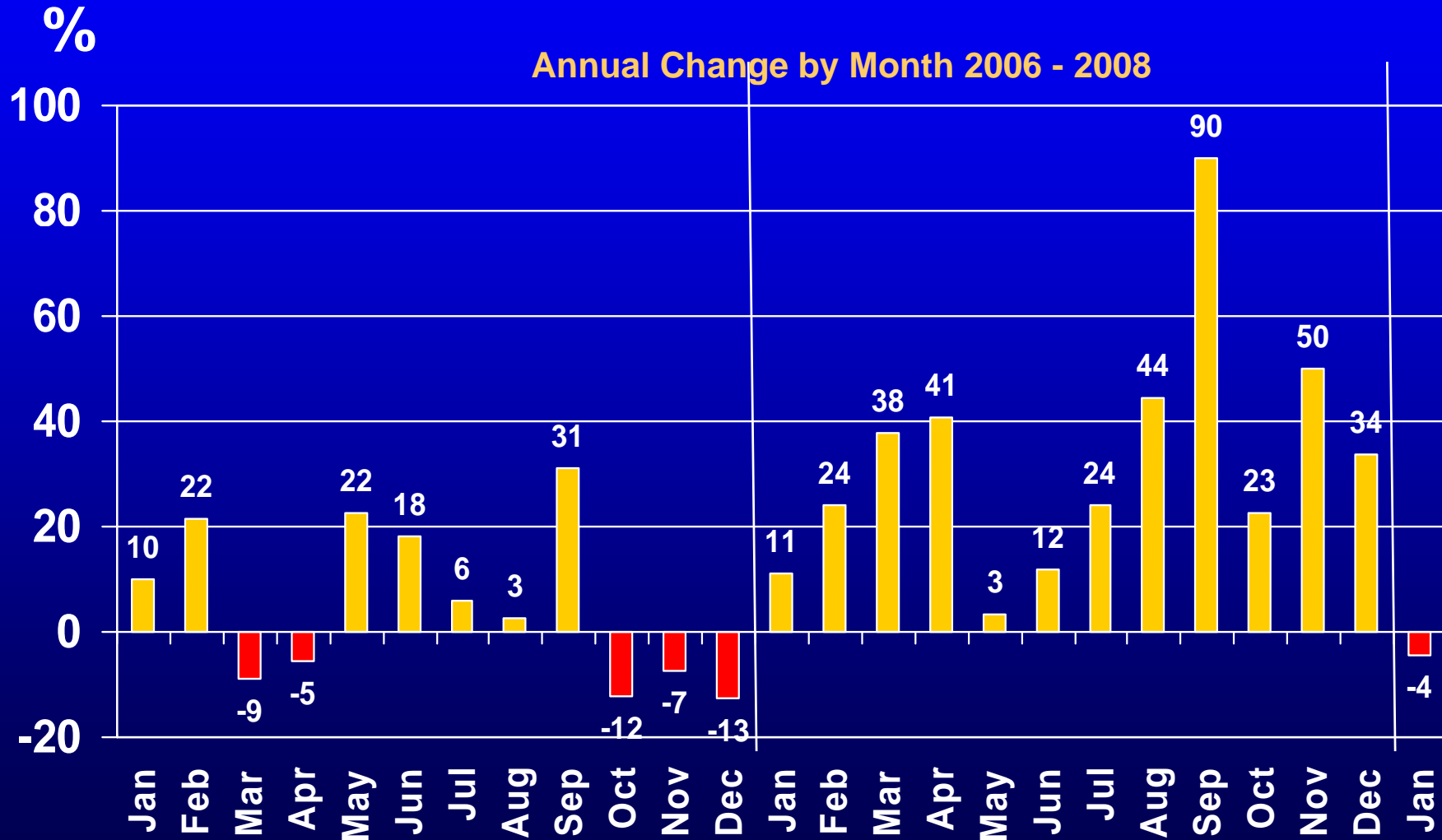
Source: MRIS, GMU Center for Regional Analysis

# Average Sales Price Percent Change Suburban Maryland Single Family Detached



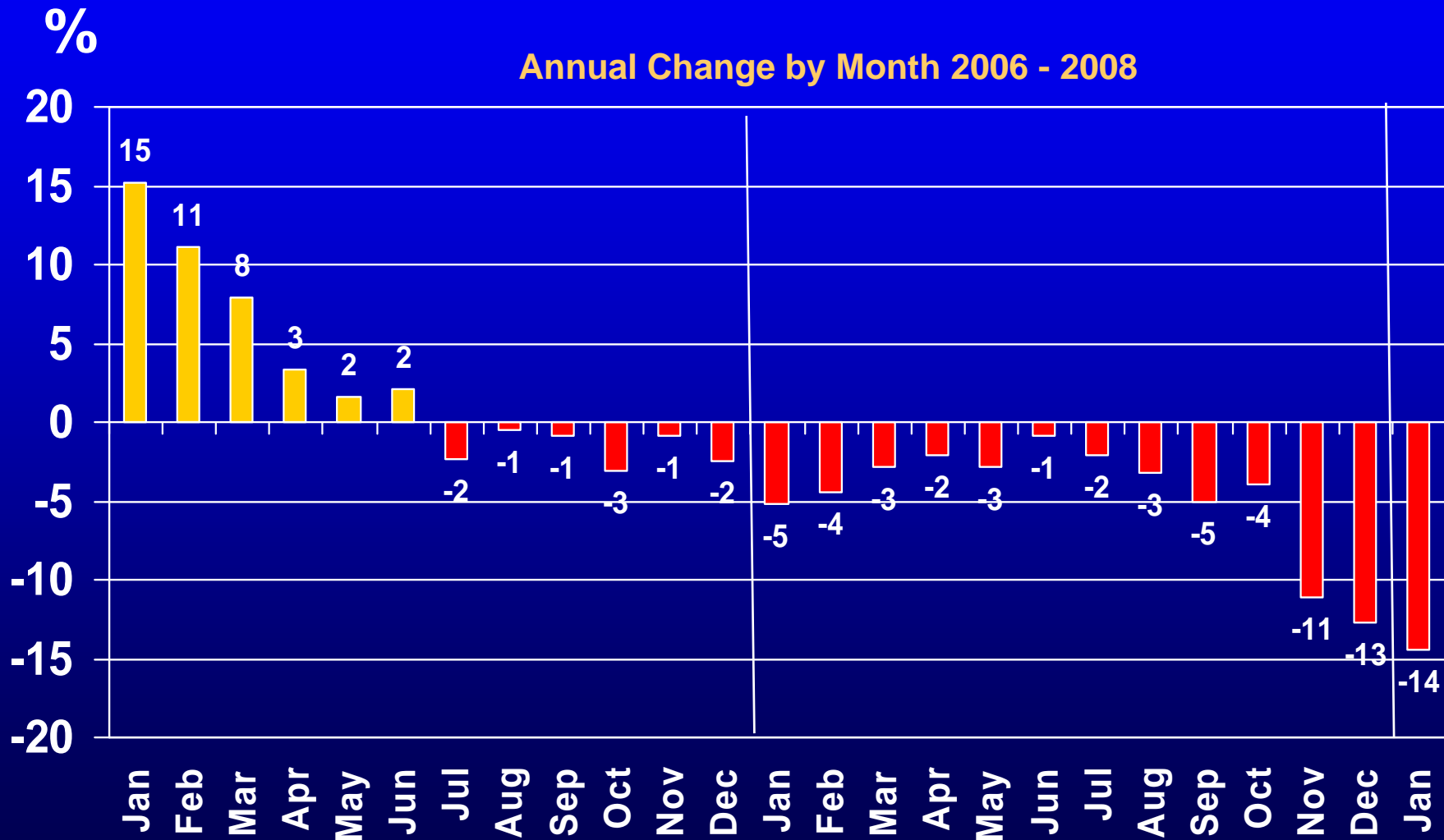
Source: MRIS, GMU Center for Regional Analysis

# Average Sales Price Percent Change District of Columbia Single Family Detached



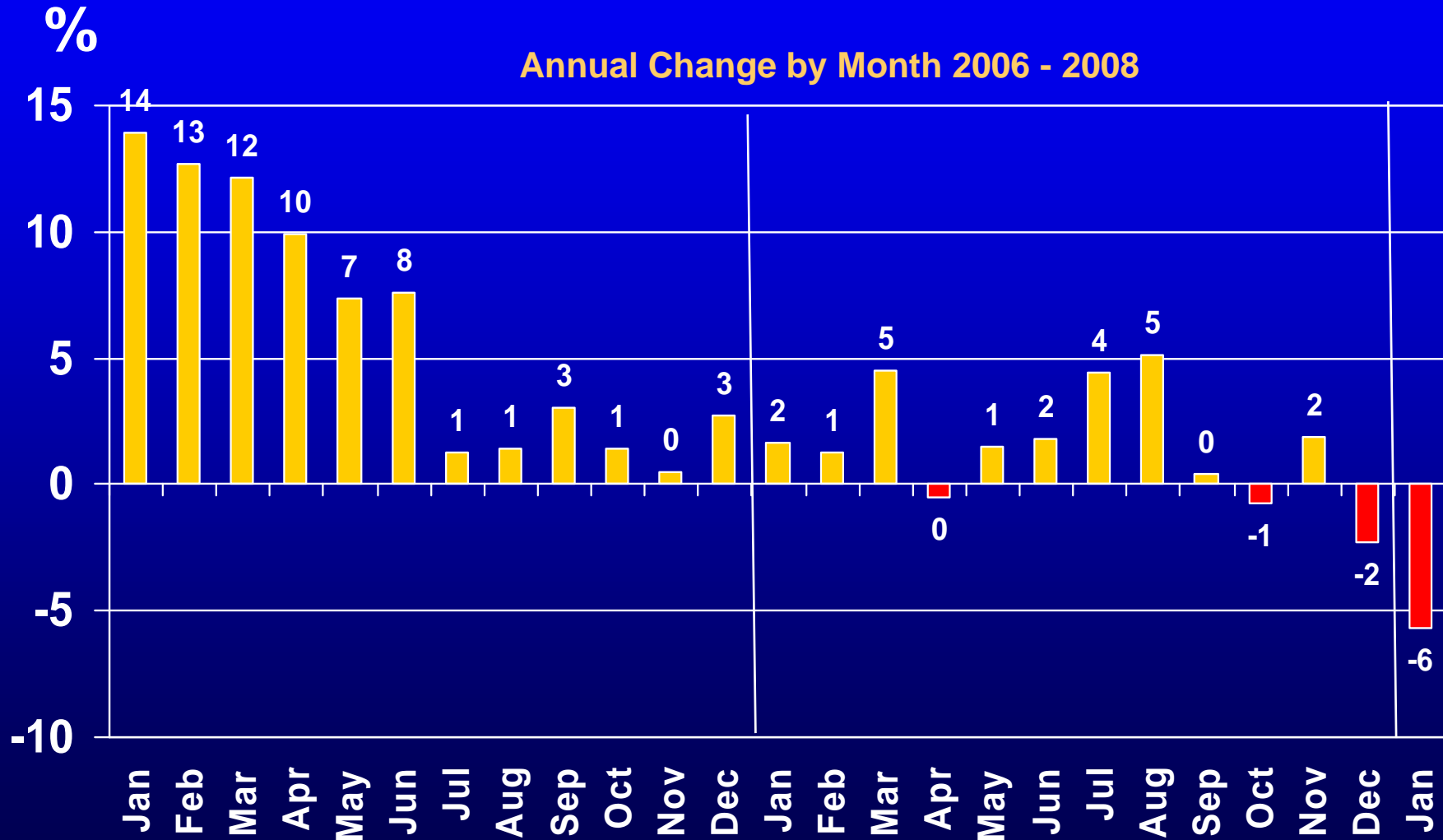
Source: MRIS, GMU Center for Regional Analysis

# Average Sales Price Percent Change Northern Virginia Single Family Attached



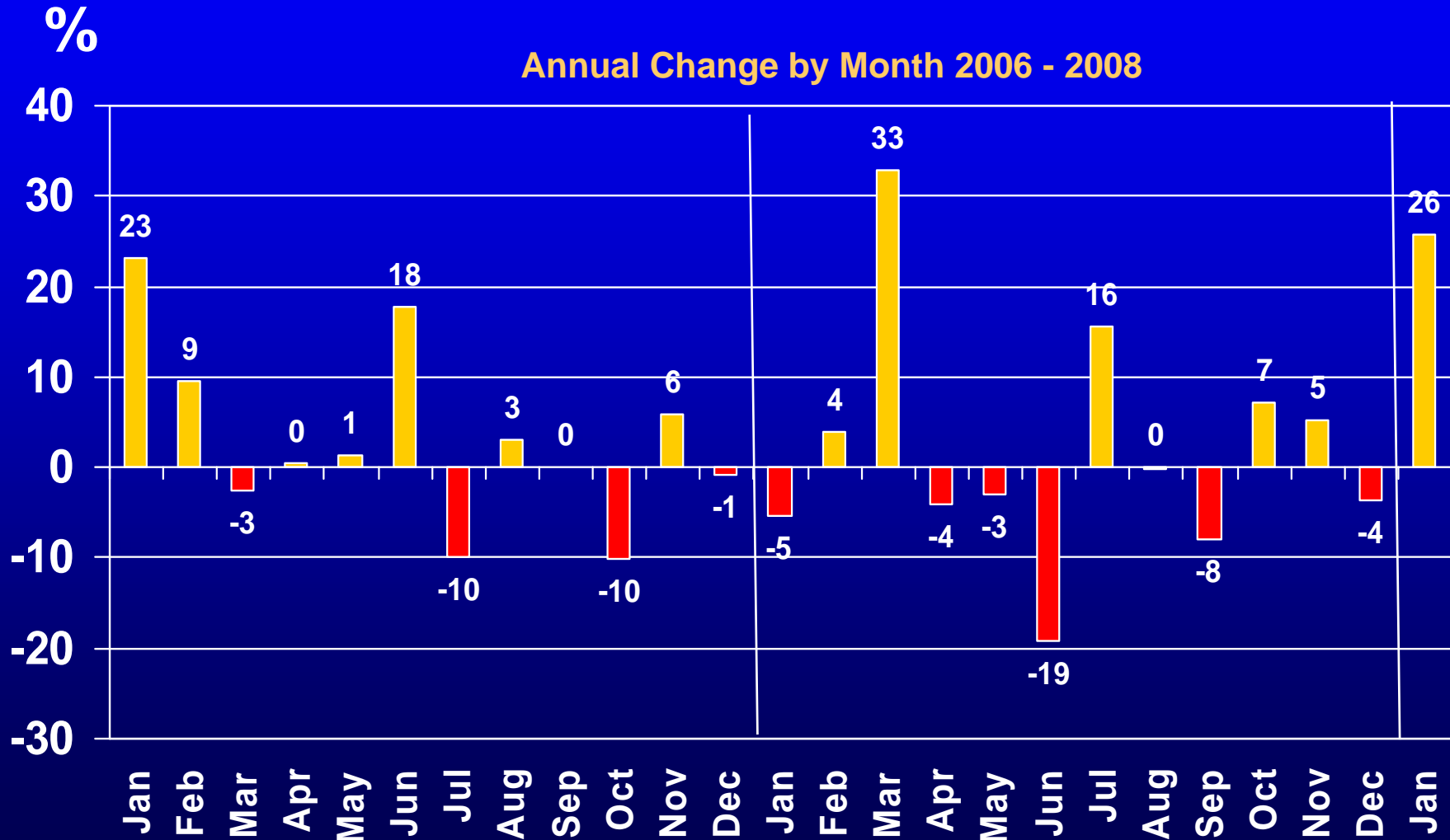
Source: MRIS, GMU Center for Regional Analysis

# Average Sales Price Percent Change Suburban Maryland Single Family Attached



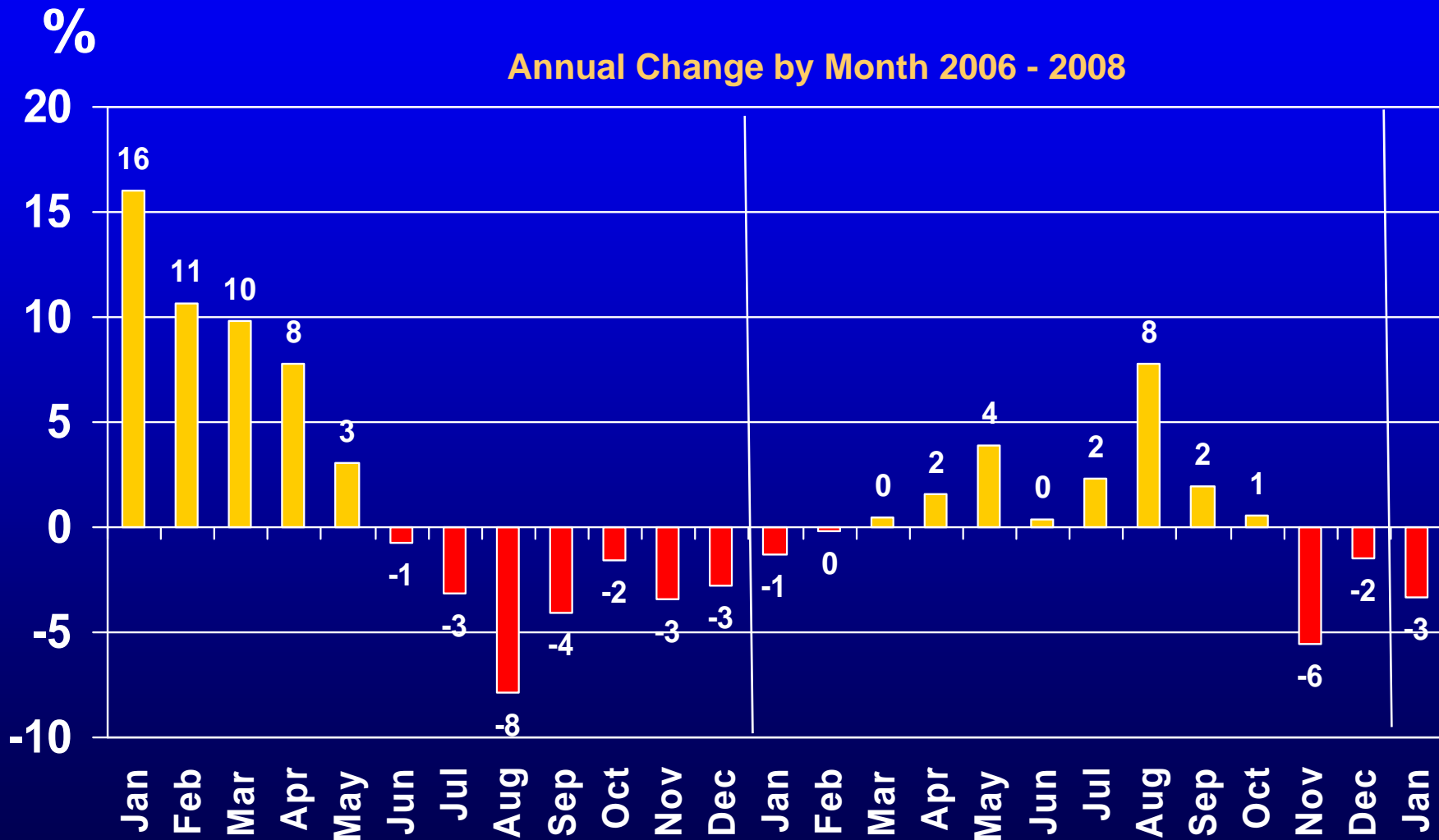
Source: MRIS, GMU Center for Regional Analysis

# Average Sales Price Percent Change District of Columbia Single Family Attached



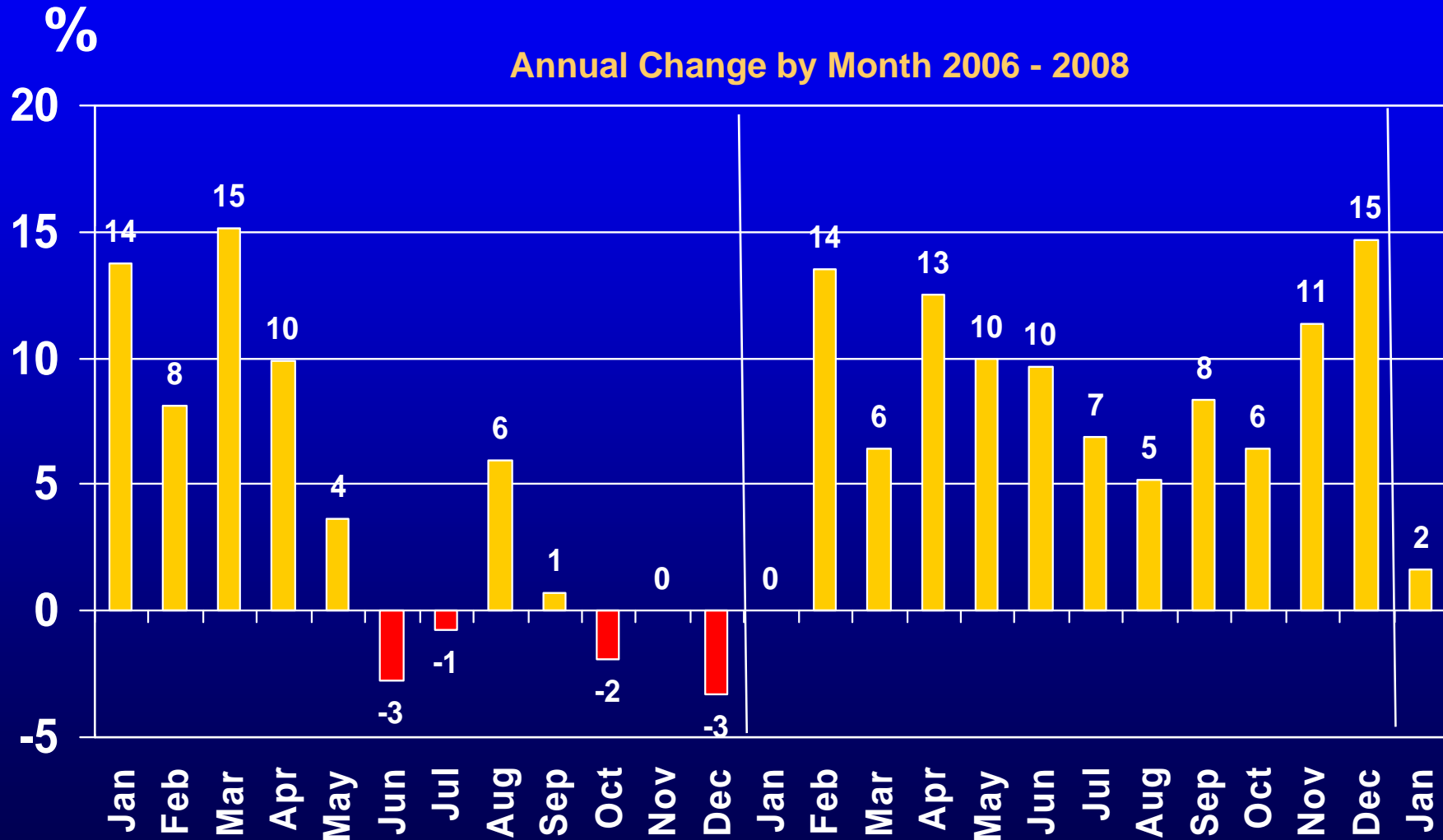
Source: MRIS, GMU Center for Regional Analysis

# Average Sales Price Percent Change Northern Virginia Condominiums



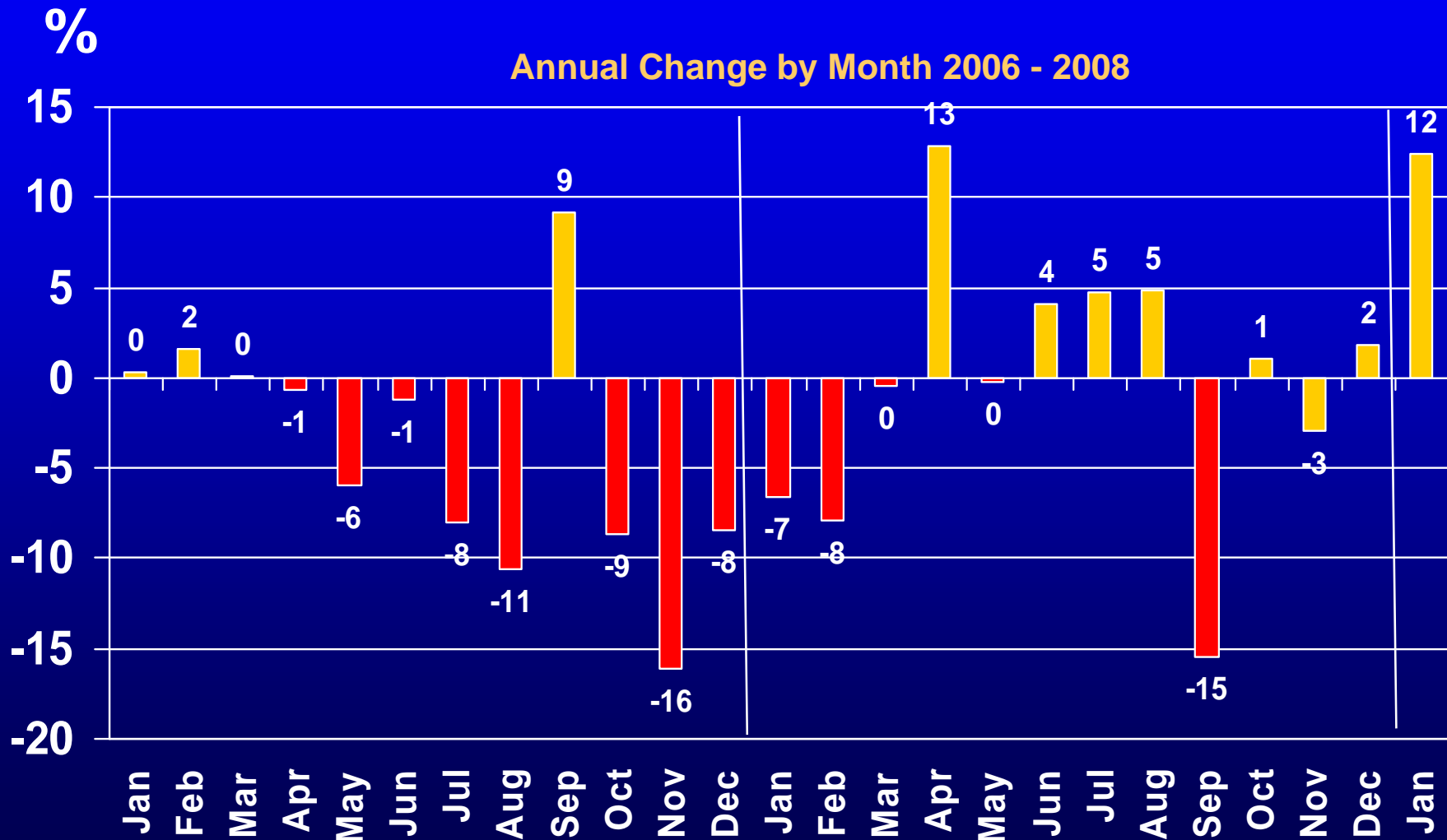
Source: MRIS, GMU Center for Regional Analysis

# Average Sales Price Percent Change Suburban Maryland Condominiums



Source: MRIS, GMU Center for Regional Analysis

# Average Sales Price Percent Change District of Columbia Condominiums



Source: MRIS, GMU Center for Regional Analysis