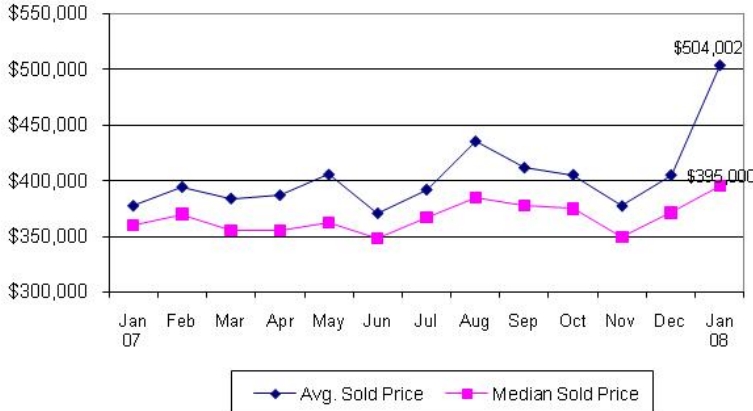


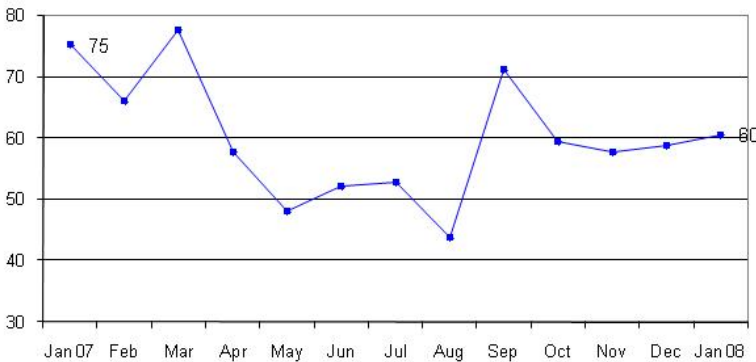
Average and Median Sold Price  
Arlington County  
Condominiums



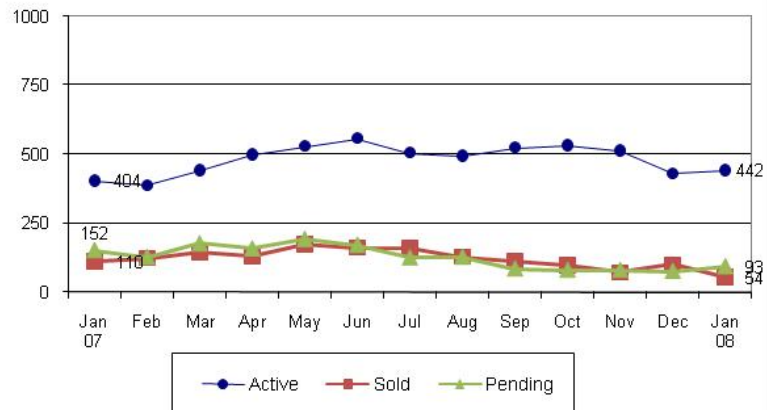
Price Data  
Arlington County  
Condominiums

	Jan 07	Jan 08	% Chg.
Avg. Sold Price	\$377,565	\$504,002	33%
Avg. Net Price	\$370,088	\$501,095	35%
Median Sold Price	\$360,000	\$395,000	10%

Days on the Market  
Arlington County  
Condominiums



Units Sold, Pending Contracts and Active Listings  
Arlington County  
Condominiums



Units Sold by Price Range  
Arlington County  
Condominiums

Price Range	Jan 07	Jan 08	% Chg.
Less than \$200,000	7	2	-71%
\$200,000-299,999	24	9	-63%
\$300,000-399,999	40	17	-58%
\$400,000-499,999	20	15	-25%
\$500,000-599,999	11	2	-82%
\$600,000-699,999	5	2	-60%
\$700,000-799,999	2	0	-100%
\$800,000-899,999	0	1	-
\$900,000-999,999	0	1	-
\$1,000,000+	0	5	-
Totals	109	54	-50%

Listings by Price Range  
Arlington County  
Condominiums

Price Range	Active Listings			New Listings		
	Jan 07	Jan 08	% Chg.	Jan 07	Jan 08	% Chg.
Less than \$200,000	28	44	57%	8	10	25%
\$200,000-299,999	91	105	15%	37	39	5%
\$300,000-399,999	102	135	32%	58	56	-3%
\$400,000-499,999	73	74	1%	37	30	-19%
\$500,000-599,999	44	39	-11%	23	16	-30%
\$600,000-699,999	22	14	-36%	10	5	-50%
\$700,000-799,999	16	6	-63%	8	2	-75%
\$800,000-899,999	11	5	-55%	5	2	-60%
\$900,000-999,999	7	4	-43%	5	2	-60%
\$1,000,000+	10	16	60%	7	7	0%
Totals	404	442	9%	198	169	-15%

**DEFINITIONS**

Active listings: listings with one of the following listings statuses at the end of the month: ACTIVE, CNTG/NO KO or CNTG/KO.  
 Pending contracts: homes that went under contract during the month.  
 Avg. sold price: mathematical average of price of all homes sold.  
 Median sold price: price at which half of the homes sold for more and half sold for less.  
 Net price: sold price minus the amount of any seller subsidy.  
 Days on the market: calculated from the MRIS days on the market field (DOMP).

Data Source: Metropolitan Regional Information Systems, Inc. (MRIS)

Data presented in this report may differ from MRIS and other reports because of the different timing of data retrieval.