

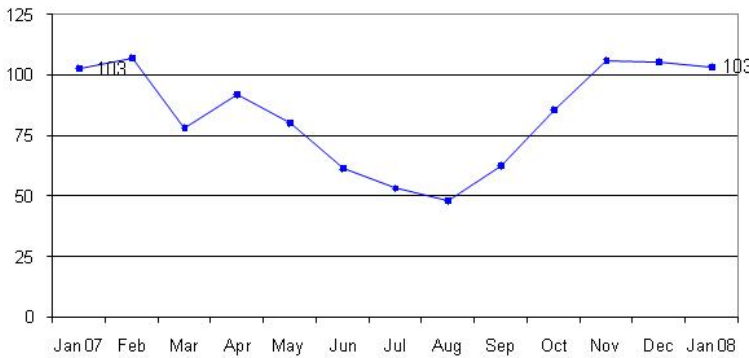
Average and Median Sold Price  
Arlington County  
Single-Family Detached



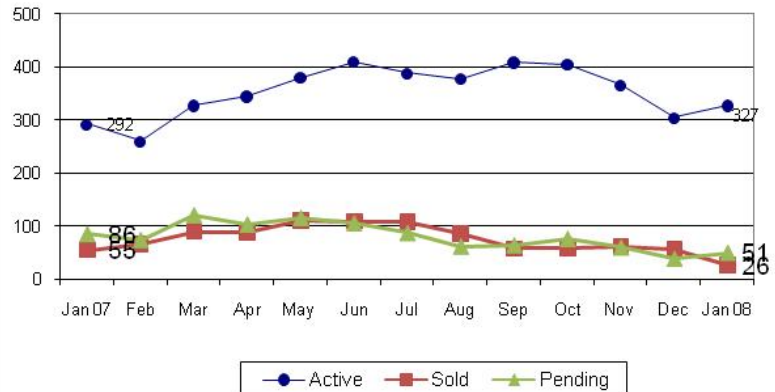
Price Data  
Arlington County  
Single-Family Detached

|                   | Jan 07    | Jan 08    | % Chg. |
|-------------------|-----------|-----------|--------|
| Avg. Sold Price   | \$714,908 | \$738,846 | 3%     |
| Avg. Net Price    | \$709,618 | \$733,614 | 3%     |
| Median Sold Price | \$590,000 | \$659,000 | 12%    |

Days on the Market  
Arlington County  
Single-Family Detached



Units Sold, Pending Contracts and Active Listings  
Arlington County  
Single-Family Detached



Units Sold by Price Range  
Arlington County  
Single-Family Detached

| Price Range         | Jan 07    | Jan 08    | % Chg.      |
|---------------------|-----------|-----------|-------------|
| Less than \$200,000 | 0         | 0         | -           |
| \$200,000-299,999   | 0         | 1         | -           |
| \$300,000-399,999   | 1         | 2         | 100%        |
| \$400,000-499,999   | 10        | 3         | -70%        |
| \$500,000-599,999   | 17        | 2         | -88%        |
| \$600,000-699,999   | 8         | 7         | -13%        |
| \$700,000-799,999   | 7         | 5         | -29%        |
| \$800,000-899,999   | 2         | 1         | -50%        |
| \$900,000-999,999   | 3         | 1         | -67%        |
| \$1,000,000+        | 7         | 4         | -43%        |
| <b>Totals</b>       | <b>55</b> | <b>26</b> | <b>-53%</b> |

Listings by Price Range  
Arlington County  
Single-Family Detached

| Price Range         | Active Listings |            |            | New Listings |           |             |
|---------------------|-----------------|------------|------------|--------------|-----------|-------------|
|                     | Jan 07          | Jan 08     | % Chg.     | Jan 07       | Jan 08    | % Chg.      |
| Less than \$200,000 | 0               | 0          | -          | 0            | 0         | -           |
| \$200,000-299,999   | 0               | 1          | -          | 0            | 2         | -           |
| \$300,000-399,999   | 1               | 17         | 1600%      | 0            | 5         | -           |
| \$400,000-499,999   | 10              | 32         | 220%       | 10           | 10        | 0%          |
| \$500,000-599,999   | 53              | 64         | 21%        | 50           | 24        | -52%        |
| \$600,000-699,999   | 43              | 50         | 16%        | 50           | 22        | -56%        |
| \$700,000-799,999   | 43              | 29         | -33%       | 58           | 9         | -84%        |
| \$800,000-899,999   | 20              | 24         | 20%        | 14           | 12        | -14%        |
| \$900,000-999,999   | 16              | 16         | 0%         | 18           | 8         | -56%        |
| \$1,000,000+        | 106             | 94         | -11%       | 58           | 29        | -50%        |
| <b>Totals</b>       | <b>292</b>      | <b>327</b> | <b>12%</b> | <b>258</b>   | <b>27</b> | <b>-90%</b> |

**DEFINITIONS**

Active listings: listings with one of the following listings statuses at the end of the month: ACTIVE, CNTG/NO KO or CNTG/KO.  
 Pending contracts: homes that went under contract during the month.  
 Avg. sold price: mathematical average of price of all homes sold.  
 Median sold price: price at which half of the homes sold for more and half sold for less.  
 Net price: sold price minus the amount of any seller subsidy.  
 Days on the market: calculated from the MRIS days on the market field (DOMP).

Data Source: Metropolitan Regional Information Systems, Inc. (MRIS)  
 Data presented in this report may differ from MRIS and other reports because of the different timing of data retrieval.