

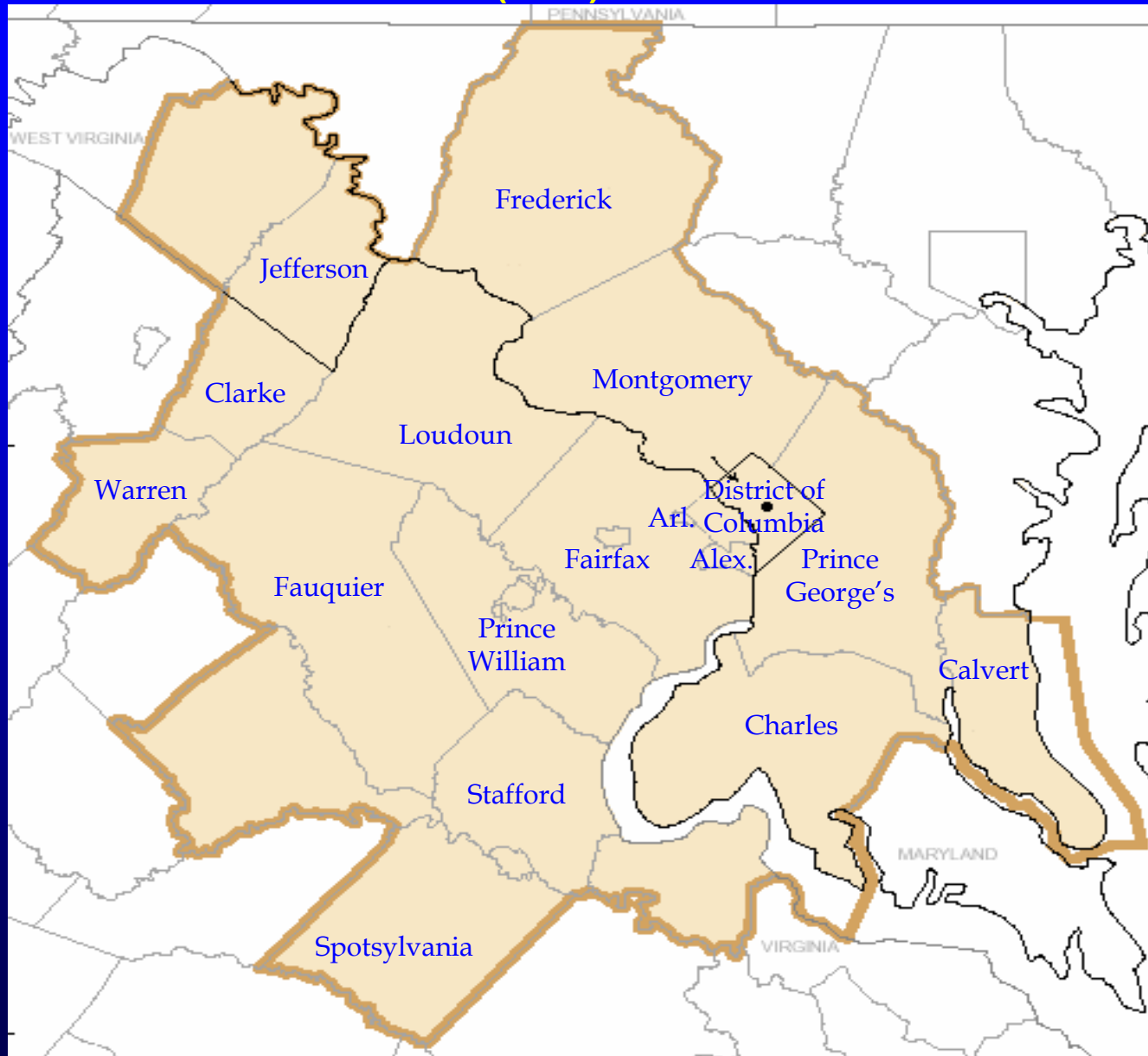
*Prince William County
Board of Supervisors*

The Future of Prince William

**Stephen S. Fuller, PhD
Dwight Schar Faculty Chair and University Professor
Director, Center for Regional Analysis
George Mason University**

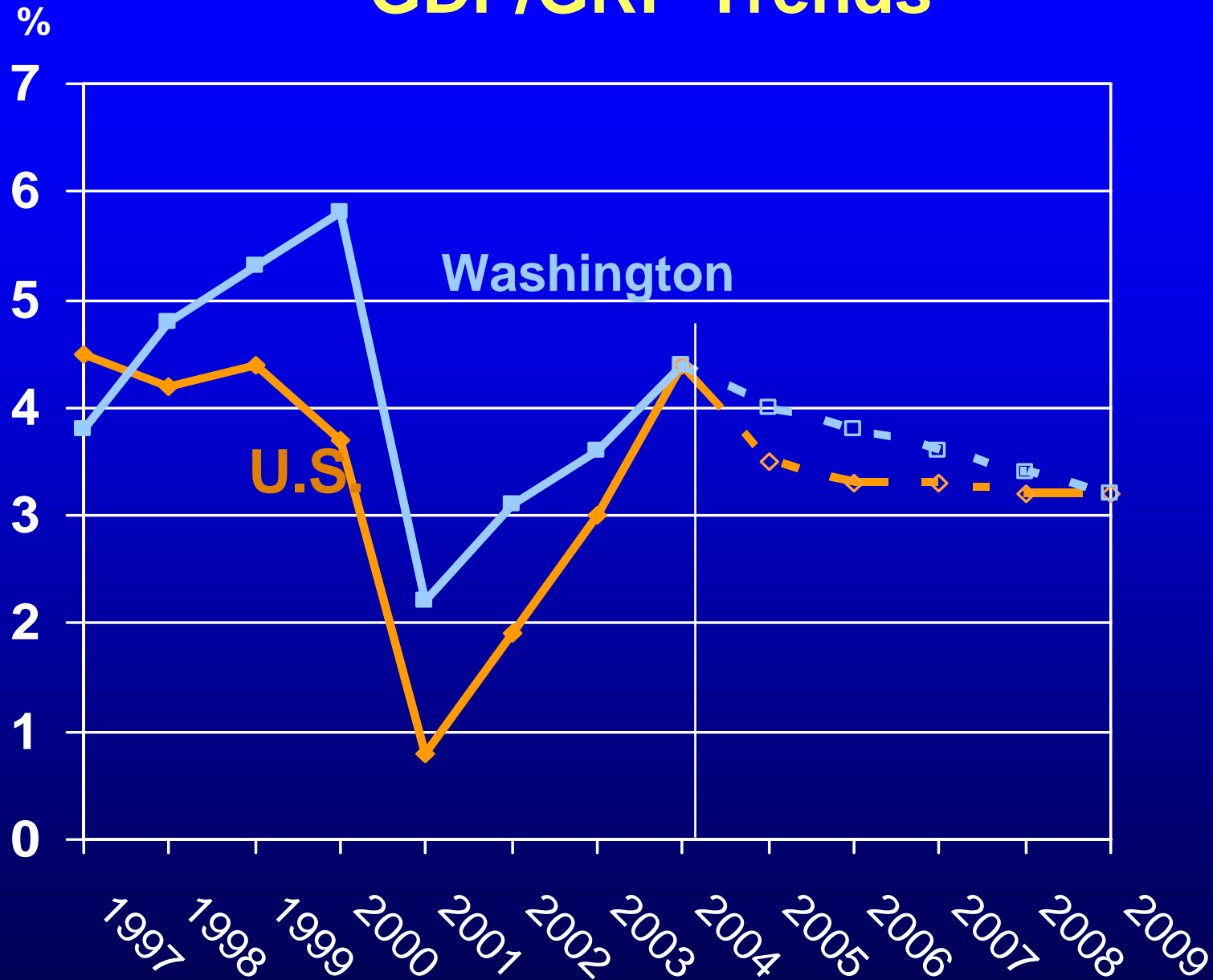
May 17, 2005

The Washington, DC-MD-VA-WV MSA (1993)



The Washington Area Economy is Different

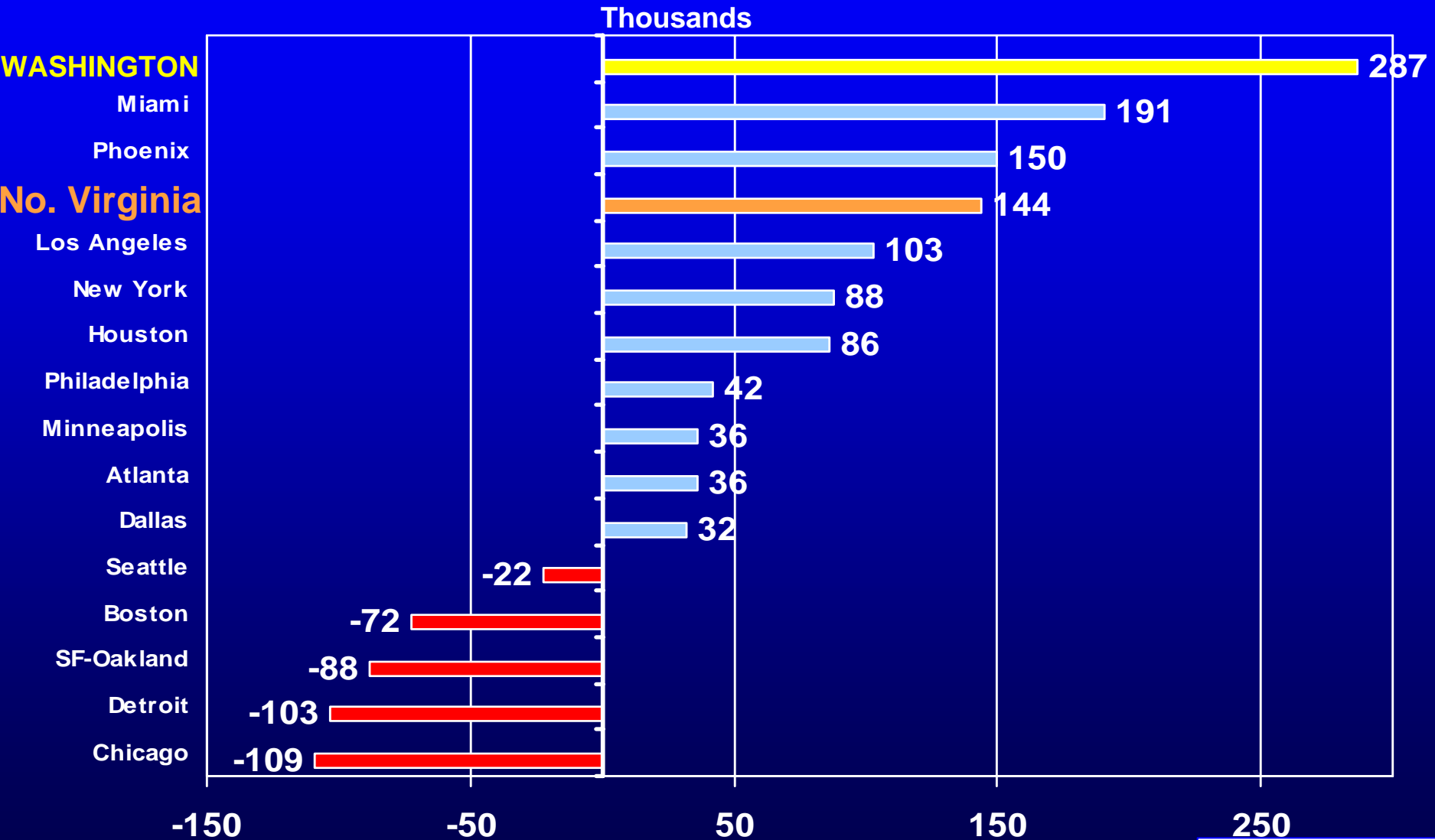
GDP/GRP Trends



Metro Comparisons

Job Change Last Five Years

15 Largest Metro Areas

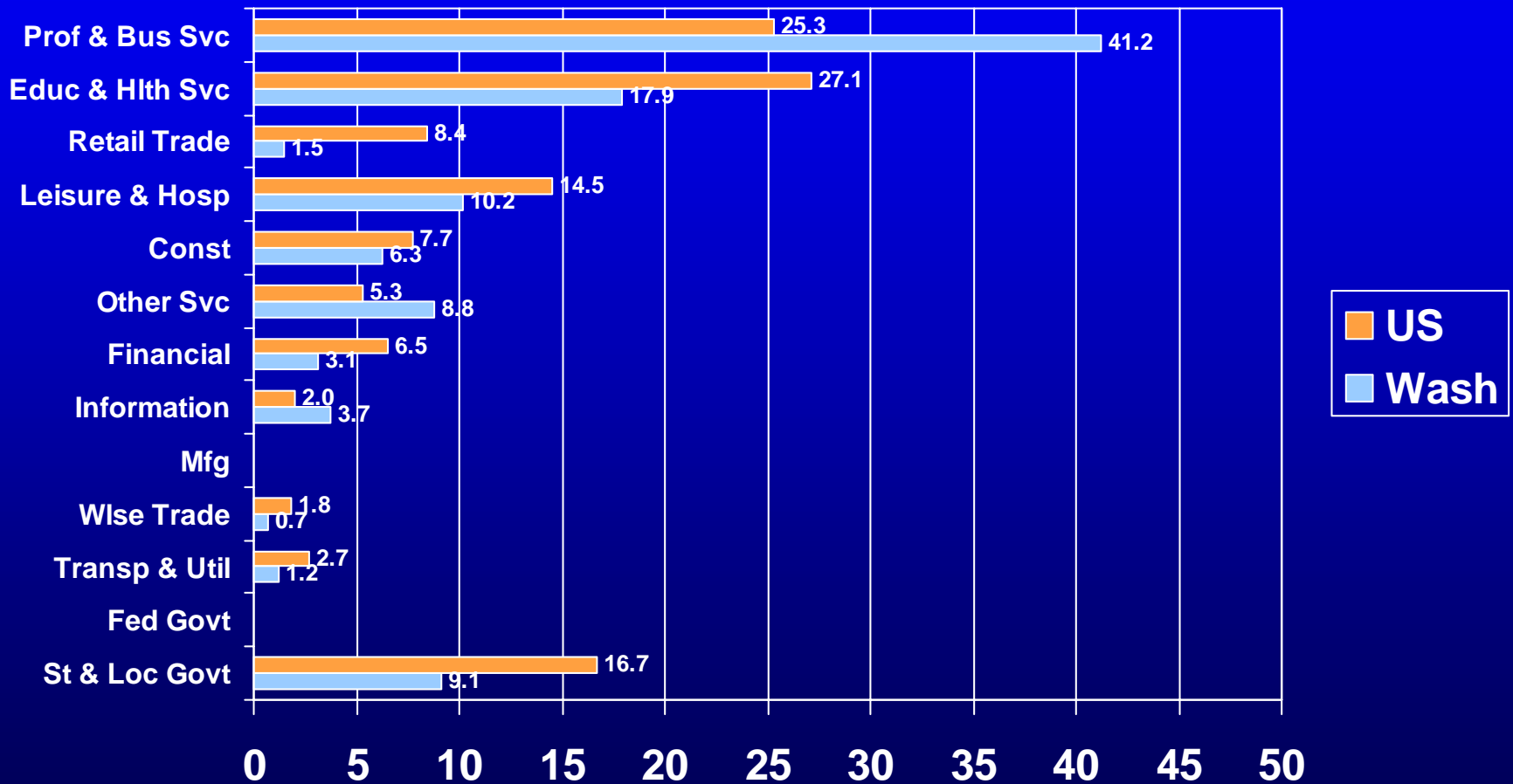


1990 - 2004

Share of Job Growth By Sector

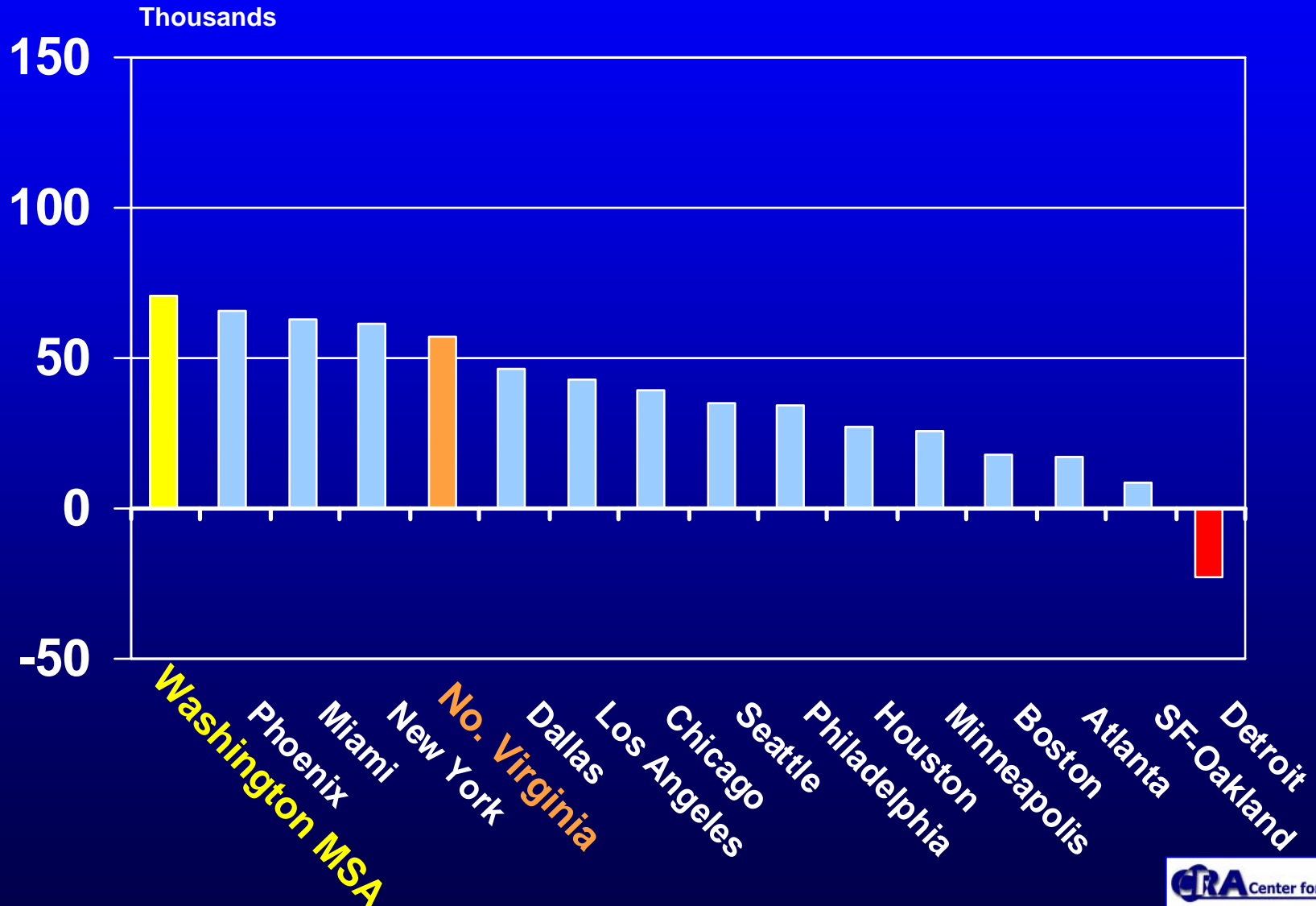
U.S. vs PMSA

%



15 Largest Job Markets

Job Change Mar 2004 – Mar 2005

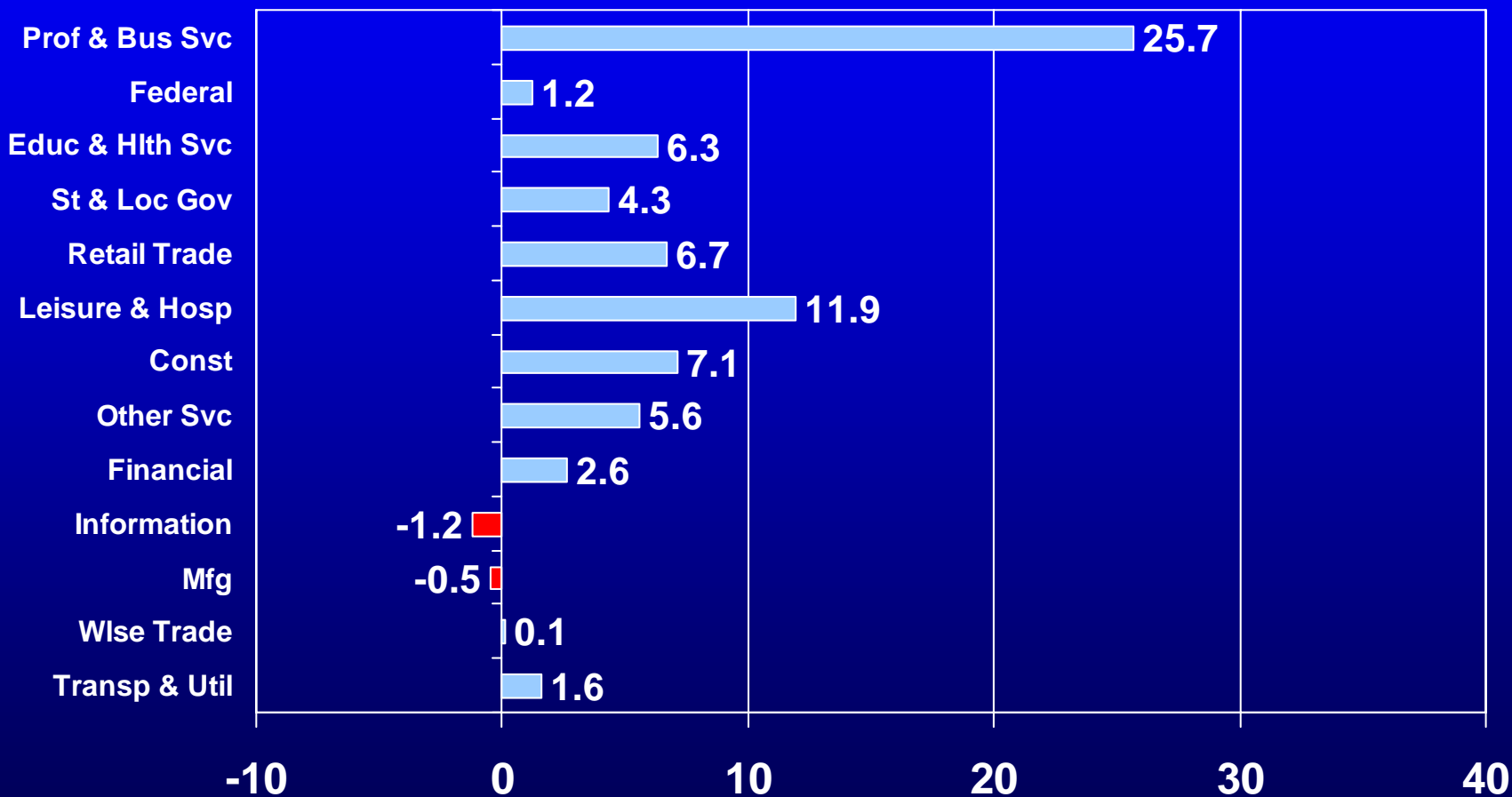


Mar 04 – Mar 05 Job Change By Sector MSA

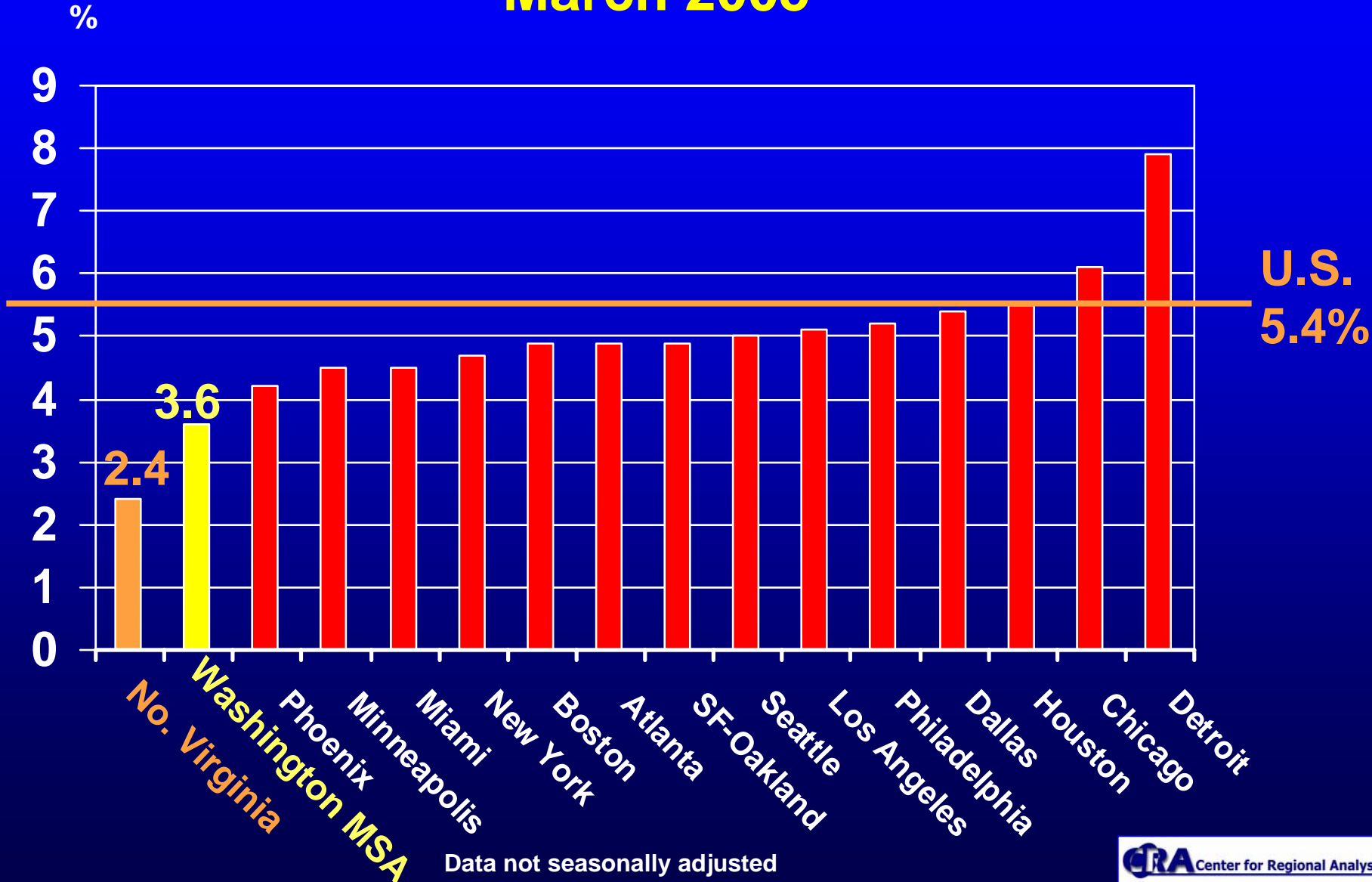
(000s)

Total = 70,900

(Ranked by Size of Sector)

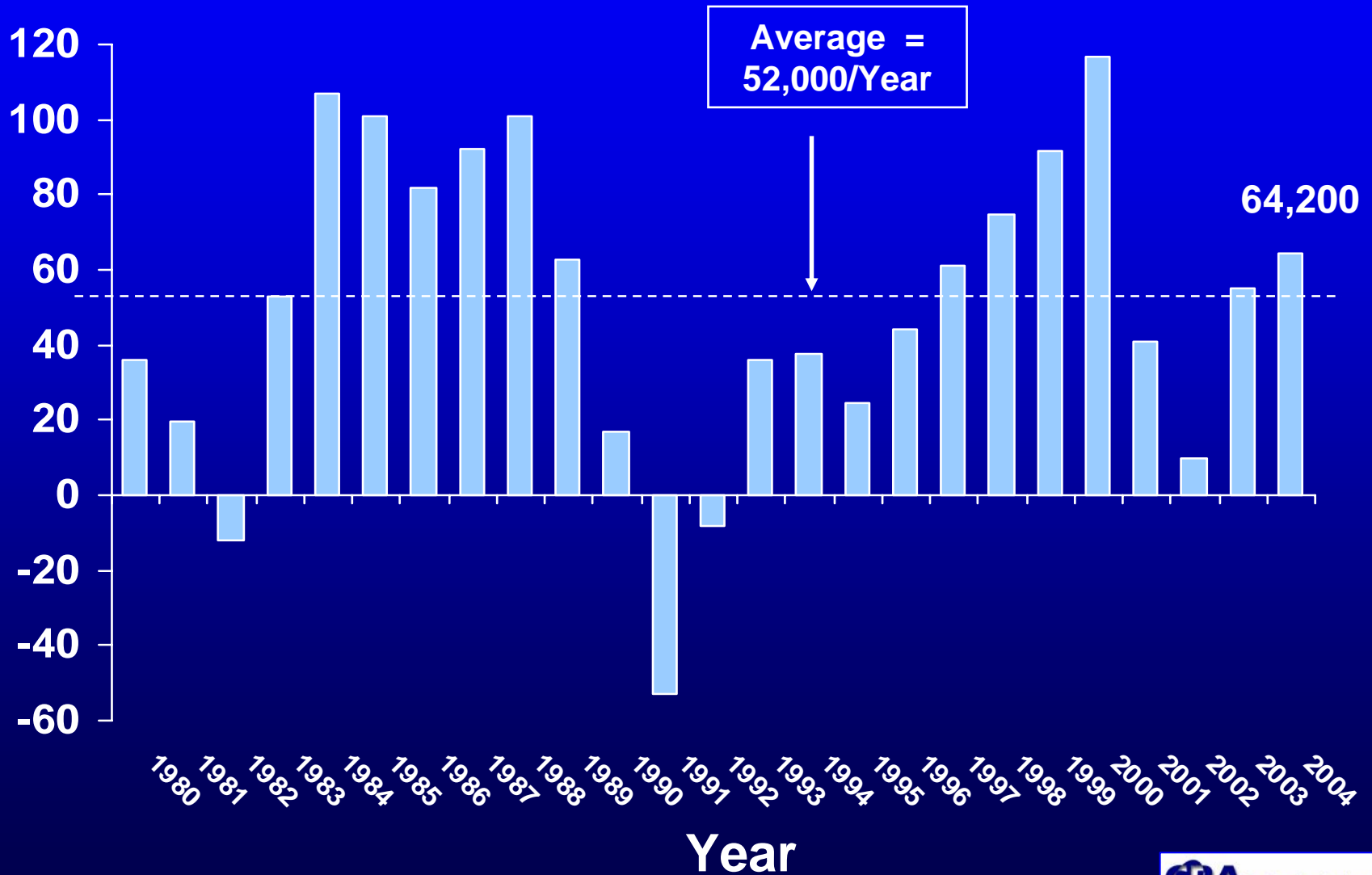


15 Largest Job Markets Ranked by Unemployment Rate March 2005

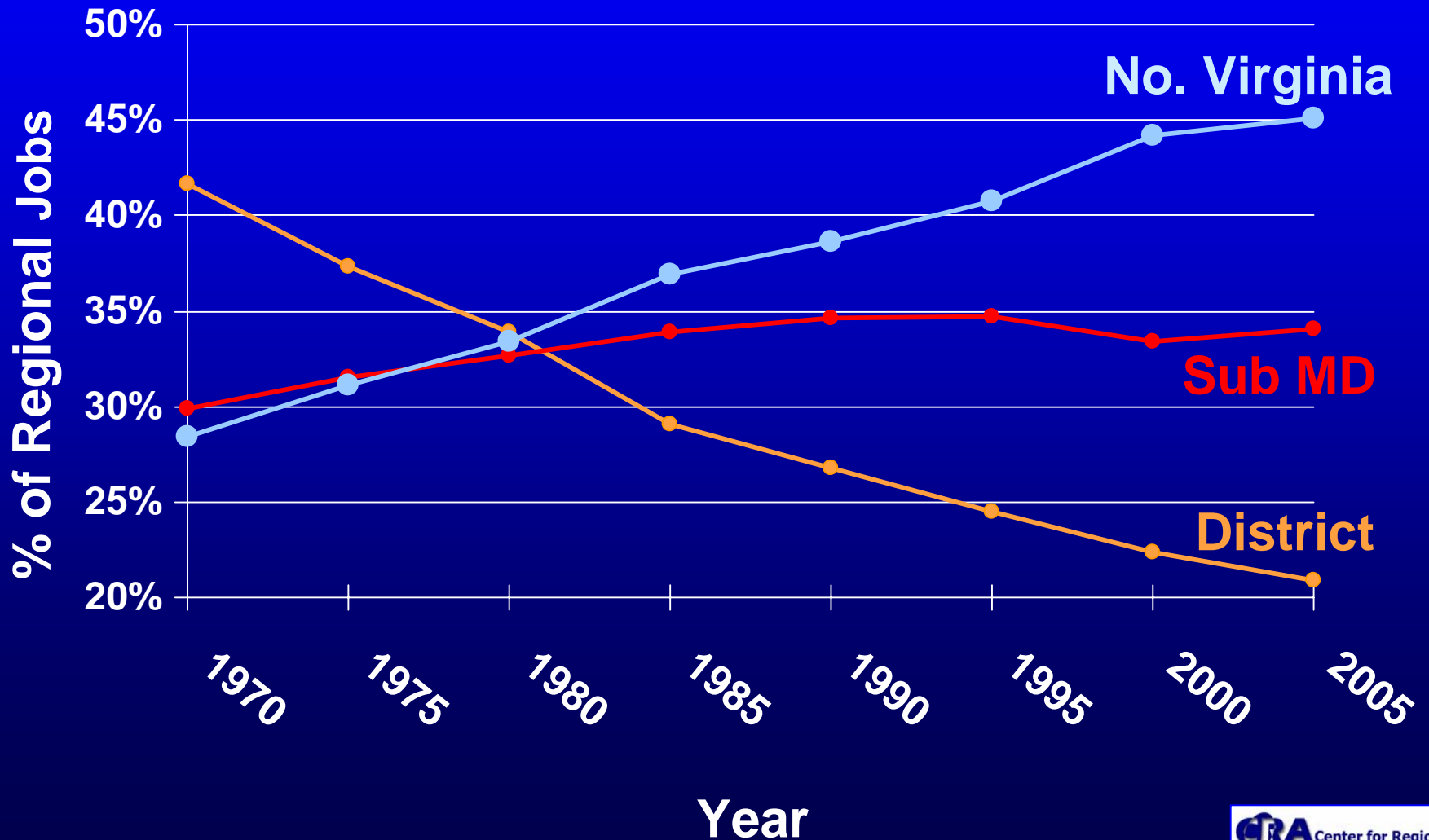


Job Growth in the Washington Area

Washington Metro Annual Job Change: 1980 - 2004



Share of Washington Area Jobs 1970-2005



How Does Prince William Measure Up?

Prince William County: Economic Trends, 1970 – 2000

(% change over decade)

	1970-80	1980-90	1990-00
Pop	52.0	49.2	31.0
Jobs	62.0	49.0	35.9
GCP	86.2	95.0	53.9
GRP*	70.0	61.1	40.4

* Washington Area

Changing Structure of Prince William County's Economy, 1970-2000

(% Job Distribution)

	PW 1970	PW 2000	Area 2000
Construction	7.2	11.9	5.6
Manufacturing	3.6	3.6	3.2
TCPU	3.7	3.8	4.6
Wholesale Trade	1.0	3.0	2.8
Retail Trade	13.8	23.1	13.6
FIRE	6.6	4.9	7.4
Services	11.8	28.2	41.3
Government	51.6	19.2	20.1
Federal Civilian	8.3	3.3	10.1
Military	32.4	4.8	2.4
State & Local	10.8	11.1	7.6

What's the Outlook For Prince William And the Region ?

Prince William County: Economic Outlook, 2000 – 2020 (% Change)

	2000 - 2010	2010 - 2020
Pop	31.4	20.8
Jobs	34.0	20.4
GCP	71.9	48.2
GRP*	37.9	29.3

* Washington Area

Changing Structure of Prince William County's Economy, 2001 - 2020

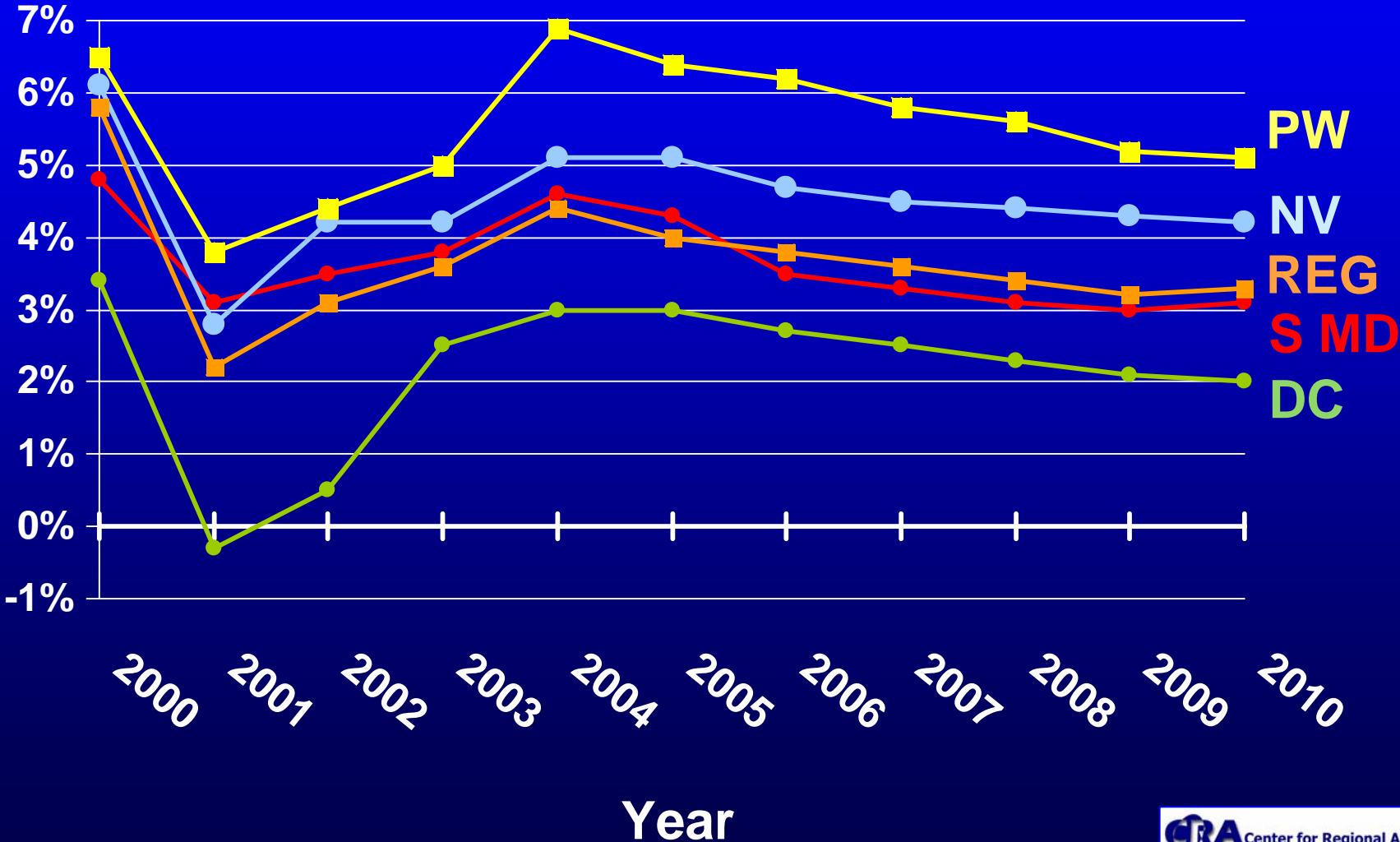
(% Job Distribution)

	PW 2001	PW 2020	Area 2020
Construction	13.0	11.6	5.0
Manufacturing	3.2	1.9	2.0
TCPU	4.3	4.1	6.5
Wholesale Trade	1.5	1.8	2.0
Retail Trade	15.9	16.6	8.4
FIRE	11.5	10.2	7.4
Services	31.2	36.7	49.5
Government	18.9	16.7	18.3
Federal Civilian	2.9	2.5	9.5
Military	4.8	2.9	1.6
State & Local	11.2	11.2	7.2

Economic Outlook (GRP) – 2010

Washington Area and Sub-state Portions

(Annual % Change)





www.cra-gmu.org